



MDGA2 mouse mAb

Catalog No	BYmab-08125
Isotype	IgG
Reactivity	Human; Mouse;Rat
Applications	WB
Gene Name	MDGA2 MAMDC1 UNQ8188/PRO23197
Protein Name	MDGA2
Immunogen	Synthesized peptide derived from human MDGA2 AA range: 726-776
Specificity	This antibody detects endogenous levels of MDGA2 at Human/Mouse/Rat
Formulation	Liquid in PBS containing 50% glycerol, 0.5% BSA and 0.240% sodium azide.
Source	Monoclonal, Mouse,IgG
Purification	The antibody was affinity-purified from mouse antiserum by affinity-chromatography using epitope-specific immunogen.
Dilution	WB 1:500-2000
Concentration	1 mg/ml
Purity	≥90%
Storage Stability	-20°C/1 year
Synonyms	MAM domain-containing glycosylphosphatidylinositol anchor protein 2 (MAM domain-containing protein 1)
Observed Band	105kD
Cell Pathway	Cell membrane ; Lipid-anchor, GPI-anchor .
Tissue Specificity	Detected in Leydig cells, syncytiotrophoblast, duodenal villi epithelial cells and neutrophils from kidney and cutaneous squamous cell carcinoma (at protein level).
Function	caution:The sequence shown here is derived from an Ensembl automatic analysis pipeline and should be considered as preliminary data.,function:May involved in cell-cell interactions.,similarity:Contains 1 MAM domain.,similarity:Contains 6 Ig-like (immunoglobulin-like) domains.,
Background	
matters needing attention	Avoid repeated freezing and thawing!

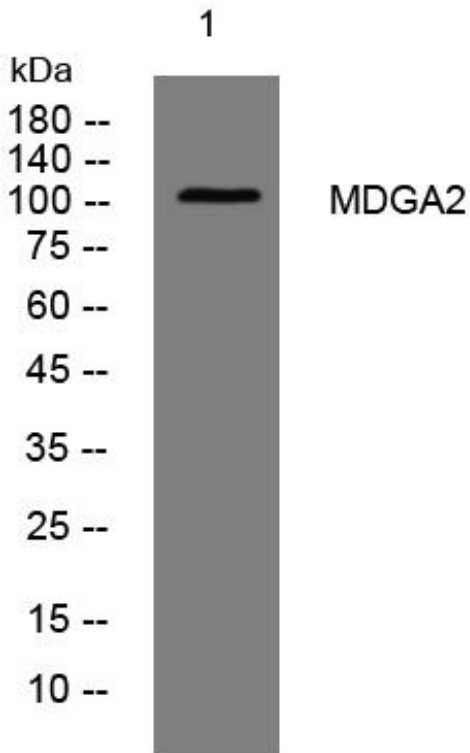
Nanjing BYabscience technology Co.,Ltd



Usage suggestions

This product can be used in immunological reaction related experiments. For more information, please consult technical personnel.

Products Images



Western Blot analysis of various cells using MDGA2 mouse mAb

Nanjing BYabscience technology Co.,Ltd

网址: www.njbybio.com

官方热线: 025-5229-8998

监督电话: 15950492658