



CSTN3 mouse mAb

Catalog No	BYmab-08122
Isotype	IgG
Reactivity	Human; Mouse;Rat
Applications	WB
Gene Name	CLSTN3 CS3 KIAA0726
Protein Name	CSTN3
Immunogen	Synthesized peptide derived from human CSTN3 AA range: 660-710
Specificity	This antibody detects endogenous levels of CSTN3 at Human/Mouse/Rat
Formulation	Liquid in PBS containing 50% glycerol, 0.5% BSA and 0.237% sodium azide.
Source	Monoclonal, Mouse,IgG
Purification	The antibody was affinity-purified from mouse antiserum by affinity-chromatography using epitope-specific immunogen.
Dilution	WB 1:500-2000
Concentration	1 mg/ml
Purity	≥90%
Storage Stability	-20°C/1 year
Synonyms	Calsyntenin-3 (Alcadein-beta) (Alc-beta)
Observed Band	105kD
Cell Pathway	Cell membrane ; Single-pass type I membrane protein . Endoplasmic reticulum membrane . Golgi apparatus membrane . Cell junction, synapse, postsynapse . Cell projection, dendrite . Most prominent in the postsynaptic specializations of asymmetric (type I) synapses with both axodendritic and axospinous localization. .
Tissue Specificity	According to PubMed:12498782, expressed predominantly in the brain and in kidney. Low levels in heart, skeletal muscle, liver, placenta, pancreas and lung. According to PubMed:12972431, predominant expression in brain, and only marginal in kidney. In brain, present throughout all cortical layers, highest levels in GABAergic neurons (based on morphology and distribution pattern).
Function	domain: Binds synaptic Ca(2+) with its cytoplasmic domain.,function: May modulate calcium-mediated postsynaptic signals (By similarity). Complex formation with APBA2 and APP, stabilizes APP metabolism and enhances APBA2-mediated suppression of beta-APP40 secretion, due to the retardation of intracellular APP maturation.,PTM: Proteolytically processed under normal cellular conditions. A primary zeta-cleavage generates a large extracellular (soluble)

Nanjing BYabscience technology Co.,Ltd



N-terminal domain (sA β C) and a short C-terminal transmembrane fragment (CTF1). A secondary cleavage catalyzed by gamma-secretase within the transmembrane domain releases the beta-A β C-beta chain in the extracellular milieu and produces an intracellular fragment (A β CICD). This processing is strongly suppressed in the tripartite complex formed with APBA2 and APP, which seems to prevent the association with gamma-secretase.,similarity:Contains 2 cadh

Background

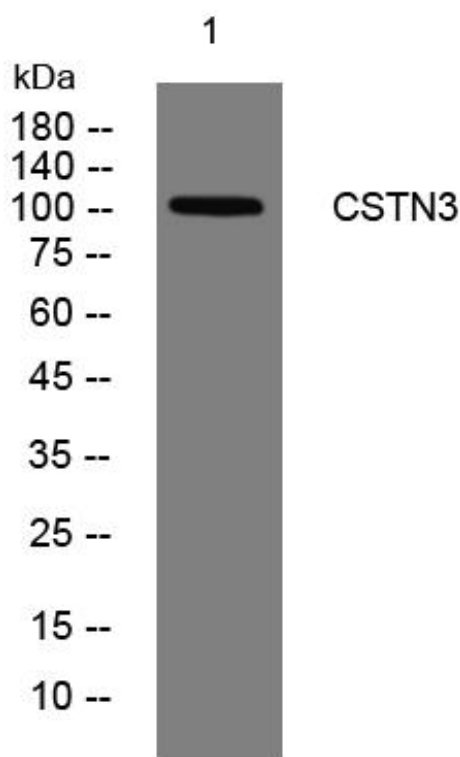
matters needing attention

Avoid repeated freezing and thawing!

Usage suggestions

This product can be used in immunological reaction related experiments. For more information, please consult technical personnel.

Products Images



Western Blot analysis of various cells using CSTN3 mouse mAb