



# HAUS6 mouse mAb

|                           |  |
|---------------------------|--|
| <b>Catalog No</b>         | BYmab-08121  |
| <b>Isotype</b>            | IgG  |
| <b>Reactivity</b>         | Human;Rat;Mouse;   |
| <b>Applications</b>       | WB   |
| <b>Gene Name</b>          | HAUS6 DGT6 FAM29A KIAA1574   |
| <b>Protein Name</b>       | HAUS6  |
| <b>Immunogen</b>          | Synthesized peptide derived from human HAUS6 AA range: 476-526   |
| <b>Specificity</b>        | This antibody detects endogenous levels of HAUS6 at Human  |
| <b>Formulation</b>        | Liquid in PBS containing 50% glycerol, 0.5% BSA and 0.236% sodium azide.   |
| <b>Source</b>             | Monoclonal, Mouse,IgG  |
| <b>Purification</b>       | The antibody was affinity-purified from mouse antiserum by affinity-chromatography using epitope-specific immunogen.   |
| <b>Dilution</b>           | WB 1:500-2000  |
| <b>Concentration</b>      | 1 mg/ml  |
| <b>Purity</b>             | ≥90%   |
| <b>Storage Stability</b>  | -20°C/1 year   |
| <b>Synonyms</b>           | HAUS augmin-like complex subunit 6   |
| <b>Observed Band</b>      | 105kD  |
| <b>Cell Pathway</b>       | Cytoplasm, cytoskeleton . Cytoplasm, cytoskeleton, spindle . Cytoplasm, cytoskeleton, microtubule organizing center, centrosome . Localizes to interphase centrosomes and to mitotic spindle microtubules. .   |
| <b>Tissue Specificity</b> | Lung,PCR rescued clones,Uterus,  |
| <b>Function</b>           |  |
| <b>Background</b>         | The protein encoded by this gene is a subunit of the augmin complex. The augmin complex plays a role in microtubule attachment to the kinetochore and central spindle formation. This protein may have a role in efficient chromosome congression and segregation by promoting microtubule-dependent microtubule amplification. Pseudogenes of this gene are located on chromosomes 7 and 20. Alternative splicing results in multiple transcript variants that encode different protein isoforms. [provided by RefSeq, Aug 2012], |

**Nanjing BYabscience technology Co.,Ltd**



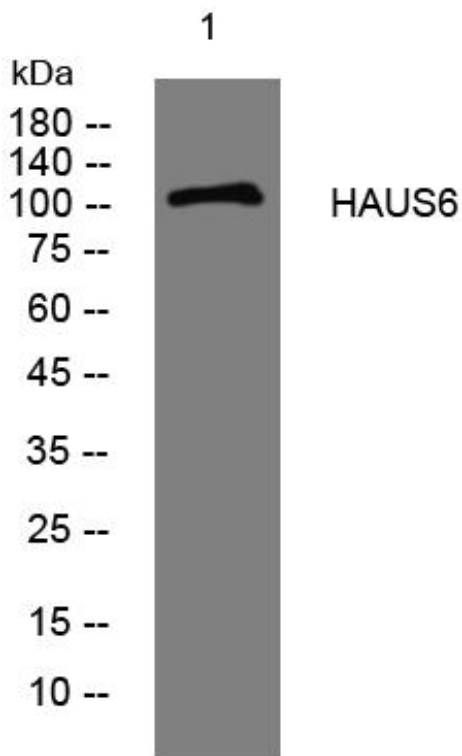
**matters needing attention**

Avoid repeated freezing and thawing!

**Usage suggestions**

This product can be used in immunological reaction related experiments. For more information, please consult technical personnel.

## Products Images



Western Blot analysis of various cells using HAUS6 mouse mAb