



# CC146 mouse mAb

Catalog No	BYmab-08118
Isotype	IgG
Reactivity	Human;Rat
Applications	WB
Gene Name	CCDC146 KIAA1505
Protein Name	CC146
Immunogen	Synthesized peptide derived from human CC146 AA range: 765-815
Specificity	This antibody detects endogenous levels of CC146 at Human/Rat
Formulation	Liquid in PBS containing 50% glycerol, 0.5% BSA and 0.233% sodium azide.
Source	Monoclonal, Mouse,IgG
Purification	The antibody was affinity-purified from mouse antiserum by affinity-chromatography using epitope-specific immunogen.
Dilution	WB 1:500-2000
Concentration	1 mg/ml
Purity	≥90%
Storage Stability	-20°C/1 year
Synonyms	Coiled-coil domain-containing protein 146
Observed Band	105kD
Cell Pathway	Cytoplasm, cytoskeleton, microtubule organizing center, centrosome, centriole . Localized to only one centriole identified as the mother centriole by co-staining with CEP164. .
Tissue Specificity	Ovary,Skeletal muscle,Testis,
Function	
Background	
matters needing attention	Avoid repeated freezing and thawing!

Nanjing BYabscience technology Co.,Ltd

网址: [www.njbybio.com](http://www.njbybio.com)

官方热线: 025-5229-8998

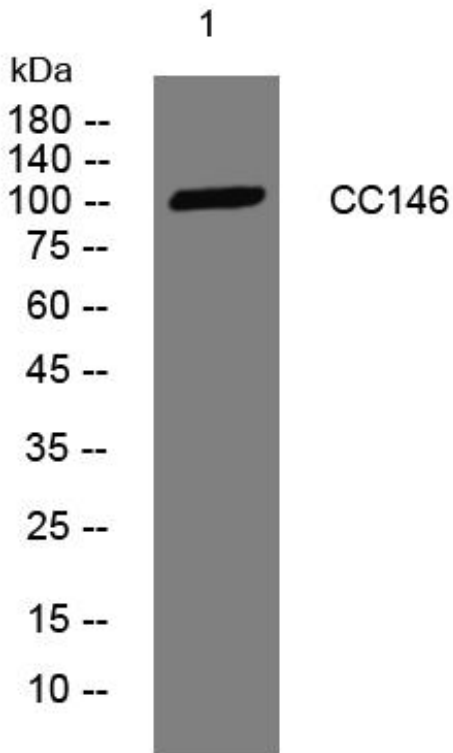
监督电话: 15950492658



### Usage suggestions

This product can be used in immunological reaction related experiments. For more information, please consult technical personnel.

## Products Images



Western Blot analysis of various cells using CC146 mouse mAb

Nanjing BYabs science technology Co.,Ltd

网址: [www.njbybio.com](http://www.njbybio.com)

官方热线: 025-5229-8998

监督电话: 15950492658