



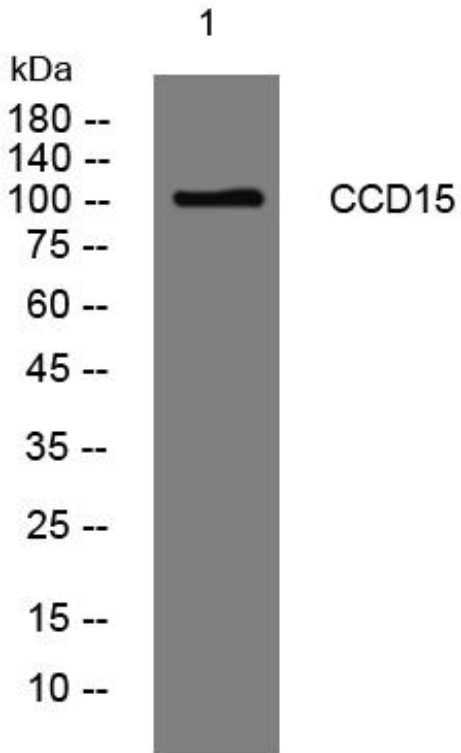
CCD15 mouse mAb

Catalog No	BYmab-08103
Isotype	IgG
Reactivity	Human; Mouse
Applications	WB
Gene Name	CCDC15
Protein Name	CCD15
Immunogen	Synthesized peptide derived from human CCD15 AA range: 747-797
Specificity	This antibody detects endogenous levels of CCD15 at Human/Mouse
Formulation	Liquid in PBS containing 50% glycerol, 0.5% BSA and 0.218% sodium azide.
Source	Monoclonal, Mouse,IgG
Purification	The antibody was affinity-purified from mouse antiserum by affinity-chromatography using epitope-specific immunogen.
Dilution	WB 1:500-2000
Concentration	1 mg/ml
Purity	≥90%
Storage Stability	-20°C/1 year
Synonyms	Coiled-coil domain-containing protein 15
Observed Band	105kD
Cell Pathway	centrosome,
Tissue Specificity	Lymph,
Function	sequence caution:Contaminating sequence. Potential poly-A sequence.,
Background	
matters needing attention	Avoid repeated freezing and thawing!
Usage suggestions	This product can be used in immunological reaction related experiments. For more information, please consult technical personnel.

Nanjing BYabscience technology Co.,Ltd



Products Images



Western Blot analysis of various cells using CCD15 mouse mAb

Nanjing BYabs science technology Co.,Ltd

网址: www.njbybio.com

官方热线: 025-5229-8998

监督电话: 15950492658