



# DDX12 mouse mAb

<b>Catalog No</b>	BYmab-08093
<b>Isotype</b>	IgG
<b>Reactivity</b>	Human;Rat;Mouse;
<b>Applications</b>	WB
<b>Gene Name</b>	DDX12P CHLR2 DDX12
<b>Protein Name</b>	DDX12
<b>Immunogen</b>	Synthesized peptide derived from human DDX12 AA range: 779-829
<b>Specificity</b>	This antibody detects endogenous levels of DDX12 at Human
<b>Formulation</b>	Liquid in PBS containing 50% glycerol, 0.5% BSA and 0.208% sodium azide.
<b>Source</b>	Monoclonal, Mouse,IgG
<b>Purification</b>	The antibody was affinity-purified from mouse antiserum by affinity-chromatography using epitope-specific immunogen.
<b>Dilution</b>	WB 1:500-2000
<b>Concentration</b>	1 mg/ml
<b>Purity</b>	≥90%
<b>Storage Stability</b>	-20°C/1 year
<b>Synonyms</b>	Putative ATP-dependent RNA helicase DDX12 (EC 3.6.4.13) (CHL1-related protein 2) (hCHLR2) (DEAD/H box protein 12)
<b>Observed Band</b>	105kD
<b>Cell Pathway</b>	Nucleus .
<b>Tissue Specificity</b>	Only expressed in proliferating tissues.
<b>Function</b>	function:DNA helicase involved in cellular proliferation. Probably required for maintaining the chromosome segregation.,similarity:Belongs to the DEAD box helicase family. DEAH subfamily. DDX11/CHL1 sub-subfamily.,similarity:Contains 1 helicase ATP-binding domain.,tissue specificity:Only expressed in proliferating tissues.,
<b>Background</b>	
<b>matters needing attention</b>	Avoid repeated freezing and thawing!

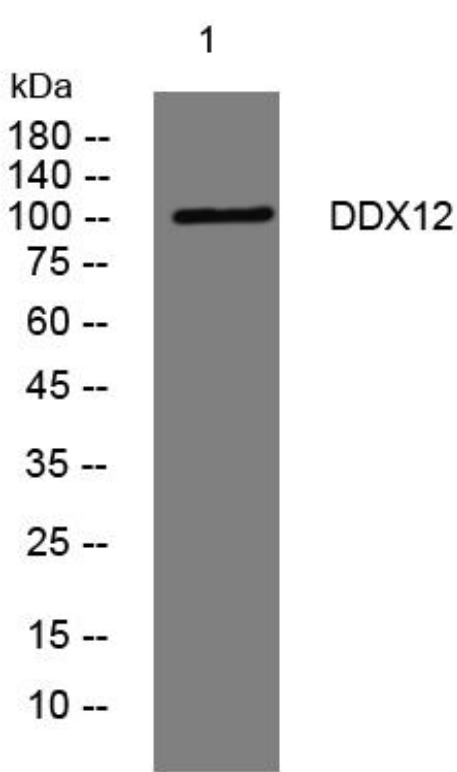
**Nanjing BYabscience technology Co.,Ltd**



### Usage suggestions

This product can be used in immunological reaction related experiments. For more information, please consult technical personnel.

## Products Images



Western Blot analysis of various cells using DDX12 mouse mAb

Nanjing BYabscience technology Co.,Ltd

网址: [www.njbybio.com](http://www.njbybio.com)

官方热线: 025-5229-8998

监督电话: 15950492658