



MMRN2 mouse mAb

Catalog No	BYmab-08089
Isotype	IgG
Reactivity	Human; Mouse
Applications	WB
Gene Name	MMRN2 EMILIN3
Protein Name	MMRN2
Immunogen	Synthesized peptide derived from human MMRN2 AA range: 133-183
Specificity	This antibody detects endogenous levels of MMRN2 at Human/Mouse
Formulation	Liquid in PBS containing 50% glycerol, 0.5% BSA and 0.204% sodium azide.
Source	Monoclonal, Mouse,IgG
Purification	The antibody was affinity-purified from mouse antiserum by affinity-chromatography using epitope-specific immunogen.
Dilution	WB 1:500-2000
Concentration	1 mg/ml
Purity	≥90%
Storage Stability	-20°C/1 year
Synonyms	Multimerin-2 (EMILIN-3) (Elastin microfibril interface located protein 3) (Elastin microfibril interfacar 3) (EndoGlyx-1 p125/p140 subunit)
Observed Band	105kD
Cell Pathway	Secreted, extracellular space, extracellular matrix .
Tissue Specificity	Endothelium.
Function	PTM:N- and O-glycosylated.,similarity:Contains 1 C1q domain.,similarity:Contains 1 EMI domain.,subunit:Heteromer of p110, p125, p140 and p200 subunits; disulfide-linked.,tissue specificity:Endothelium.,
Background	This gene encodes a protein belonging to the member of elastin microfibril interface-located (EMILIN) protein family. This family member is an extracellular matrix glycoprotein that can interfere with tumor angiogenesis and growth. It serves as a transforming growth factor beta antagonist and can interfere with the VEGF-A/VEGFR2 pathway. A related pseudogene has been identified on chromosome 6. [provided by RefSeq, Aug 2012],

Nanjing BYabscience technology Co.,Ltd



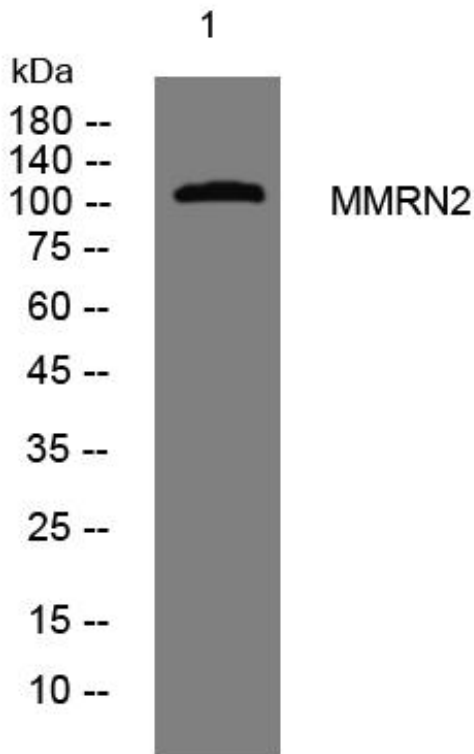
matters needing attention

Avoid repeated freezing and thawing!

Usage suggestions

This product can be used in immunological reaction related experiments. For more information, please consult technical personnel.

Products Images



Western Blot analysis of various cells using MMRN2 mouse mAb