



CCD66 mouse mAb

Catalog No	BYmab-08082
Isotype	IgG
Reactivity	Human; Mouse
Applications	WB
Gene Name	CCDC66
Protein Name	CCD66
Immunogen	Synthesized peptide derived from human CCD66 AA range: 151-201
Specificity	This antibody detects endogenous levels of CCD66 at Human/Mouse
Formulation	Liquid in PBS containing 50% glycerol, 0.5% BSA and 0.197% sodium azide.
Source	Monoclonal, Mouse,IgG
Purification	The antibody was affinity-purified from mouse antiserum by affinity-chromatography using epitope-specific immunogen.
Dilution	WB 1:500-2000
Concentration	1 mg/ml
Purity	≥90%
Storage Stability	-20°C/1 year
Synonyms	Coiled-coil domain-containing protein 66
Observed Band	105kD
Cell Pathway	Cytoplasm, cytoskeleton, microtubule organizing center, centrosome . Cytoplasm, cytoskeleton, microtubule organizing center, centrosome, centriolar satellite . Cell projection, cilium . Cytoplasm, cytoskeleton, cilium basal body . Photoreceptor inner segment . Cell projection, cilium, photoreceptor outer segment . Restricted to the centrosomes and the spindle microtubules during mitosis (PubMed:28235840). Enriched in the inner segment of the photoreceptor (PubMed:19777273). .
Tissue Specificity	Widely expressed (at protein level) (PubMed:28235840). Expressed in retina, mainly in photoreceptors but also in outer plexiform and ganglion cell layers (at protein level) (PubMed:19777273).
Function	
Background	

Nanjing BYabscience technology Co.,Ltd



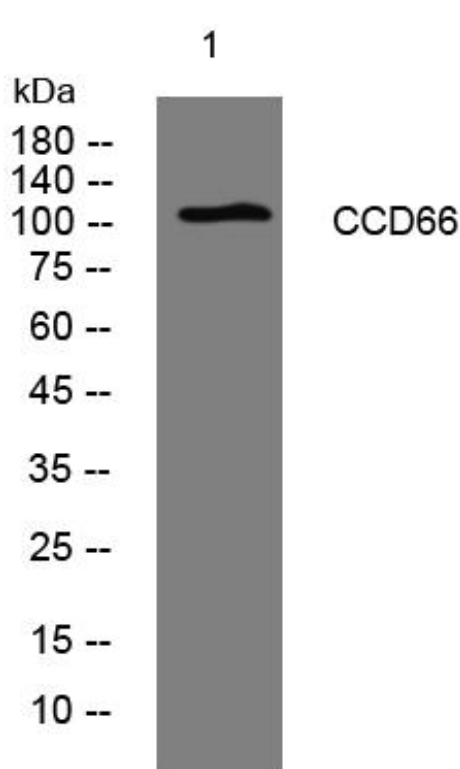
matters needing attention

Avoid repeated freezing and thawing!

Usage suggestions

This product can be used in immunological reaction related experiments. For more information, please consult technical personnel.

Products Images



Western Blot analysis of various cells using CCD66 mouse mAb