



# CP011 mouse mAb

Catalog No	BYmab-08076
Isotype	IgG
Reactivity	Human;Rat;Mouse;
Applications	WB
Gene Name	C16orf11
Protein Name	CP011
Immunogen	Synthesized peptide derived from human CP011 AA range: 477-527
Specificity	This antibody detects endogenous levels of CP011 at Human
Formulation	Liquid in PBS containing 50% glycerol, 0.5% BSA and 0.191% sodium azide.
Source	Monoclonal, Mouse,IgG
Purification	The antibody was affinity-purified from mouse antiserum by affinity-chromatography using epitope-specific immunogen.
Dilution	WB 1:500-2000
Concentration	1 mg/ml
Purity	≥90%
Storage Stability	-20°C/1 year
Synonyms	Uncharacterized protein C16orf11 (Uncharacterized protein RJD1)
Observed Band	65kD
Cell Pathway	
Tissue Specificity	Eye,Thymus,
Function	similarity:Contains 5 NHL repeats.,
Background	
matters needing attention	Avoid repeated freezing and thawing!
Usage suggestions	This product can be used in immunological reaction related experiments. For more information, please consult technical personnel.

Nanjing BYabscience technology Co.,Ltd

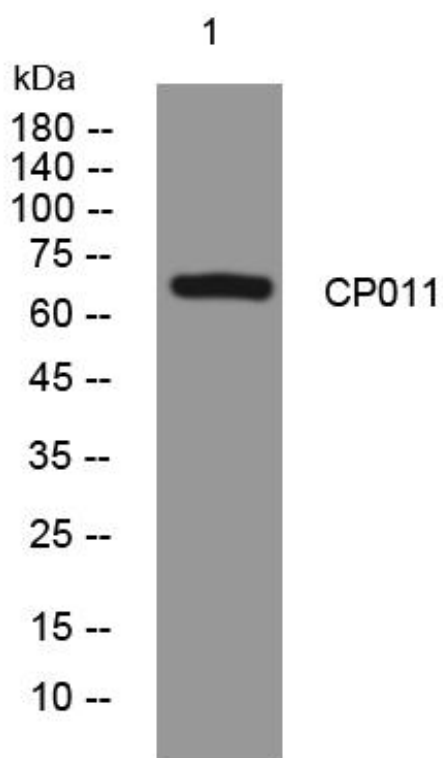
网址: [www.njbybio.com](http://www.njbybio.com)

官方热线: 025-5229-8998

监督电话: 15950492658



## Products Images



Western Blot analysis of various cells using CP011 mouse mAb