



# S47A1 mouse mAb

<b>Catalog No</b>	BYmab-08071
<b>Isotype</b>	IgG
<b>Reactivity</b>	Human; Mouse;Rat
<b>Applications</b>	WB
<b>Gene Name</b>	SLC47A1 MATE1
<b>Protein Name</b>	S47A1
<b>Immunogen</b>	Synthesized peptide derived from human S47A1 AA range: 158-208
<b>Specificity</b>	This antibody detects endogenous levels of S47A1 at Human/Mouse/Rat
<b>Formulation</b>	Liquid in PBS containing 50% glycerol, 0.5% BSA and 0.186% sodium azide.
<b>Source</b>	Monoclonal, Mouse,IgG
<b>Purification</b>	The antibody was affinity-purified from mouse antiserum by affinity-chromatography using epitope-specific immunogen.
<b>Dilution</b>	WB 1:500-2000
<b>Concentration</b>	1 mg/ml
<b>Purity</b>	≥90%
<b>Storage Stability</b>	-20°C/1 year
<b>Synonyms</b>	Multidrug and toxin extrusion protein 1 (MATE-1) (hMATE-1) (Solute carrier family 47 member 1)
<b>Observed Band</b>	65kD
<b>Cell Pathway</b>	Cell membrane ; Multi-pass membrane protein . Predominantly localized at the plasma membrane but also found in intracellular organelles.
<b>Tissue Specificity</b>	Expressed in adrenal gland, and to a lower extent in liver, skeletal muscle and kidney (especially found in luminal membranes of the urinary tubules, bile caniculi and brush border membranes).
<b>Function</b>	function:Solute transporter for tetraethylammonium (TEA), 1-methyl-4-phenylpyridinium (MPP), cimetidine, N-methylnicotinamide (NMN), metformin, creatinine, guanidine, procainamide, topotecan, estrone sulfate, acyclovir, ganciclovir and also the zwitterionic cephalosporin, cephalexin and cephradine. Seems to also play a role in the uptake of oxaliplatin (a new platinum anticancer agent). Able to transport paraquat (PQ or N,N-dimethyl-4-4'-bipyridinium); a widely used herbicide. Responsible for the secretion of cationic drugs across the brush border membranes.,similarity:Belongs to the multi antimicrobial extrusion (MATE) (TC 2.A.66.1) family.,subcellular location:Predominantly localized at the plasma

**Nanjing BYabscience technology Co.,Ltd**



membrane but also found in intracellular organelles.,tissue specificity:Expressed in adrenal gland, and to a lower extent in liver, skeletal muscle and kidney (especially found in luminal membr

#### Background

This gene is located within the Smith-Magenis syndrome region on chromosome 17. It encodes a protein of unknown function. [provided by RefSeq, Jul 2008],

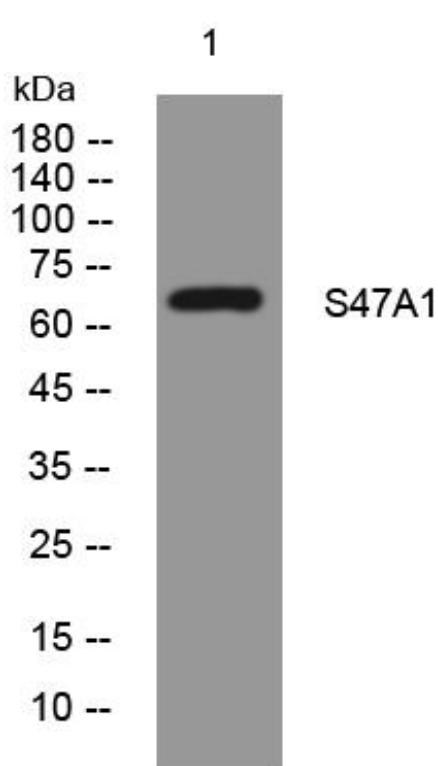
#### matters needing attention

Avoid repeated freezing and thawing!

#### Usage suggestions

This product can be used in immunological reaction related experiments. For more information, please consult technical personnel.

## Products Images



Western Blot analysis of various cells using S47A1 mouse mAb