



WDR20 mouse mAb

Catalog No	BYmab-08059
Isotype	IgG
Reactivity	Human; Mouse
Applications	WB
Gene Name	WDR20
Protein Name	WDR20
Immunogen	Synthesized peptide derived from human WDR20 AA range: 282-332
Specificity	This antibody detects endogenous levels of WDR20 at Human/Mouse
Formulation	Liquid in PBS containing 50% glycerol, 0.5% BSA and 0.174% sodium azide.
Source	Monoclonal, Mouse,IgG
Purification	The antibody was affinity-purified from mouse antiserum by affinity-chromatography using epitope-specific immunogen.
Dilution	WB 1:500-2000
Concentration	1 mg/ml
Purity	≥90%
Storage Stability	-20°C/1 year
Synonyms	WD repeat-containing protein 20 (Protein DMR)
Observed Band	60kD
Cell Pathway	
Tissue Specificity	Amygdala,Brain,Endometrium carcinoma cell line,Epithelium,Neuroblastoma,Testis,
Function	similarity:Contains 5 WD repeats.,
Background	This gene encodes a WD repeat-containing protein that functions to preserve and regulate the activity of the USP12-UAF1 deubiquitinating enzyme complex. Multiple alternatively spliced transcript variants have been found for this gene. [provided by RefSeq, Jun 2011],
matters needing attention	Avoid repeated freezing and thawing!

Nanjing BYabscience technology Co.,Ltd

网址: www.njbybio.com

官方热线: 025-5229-8998

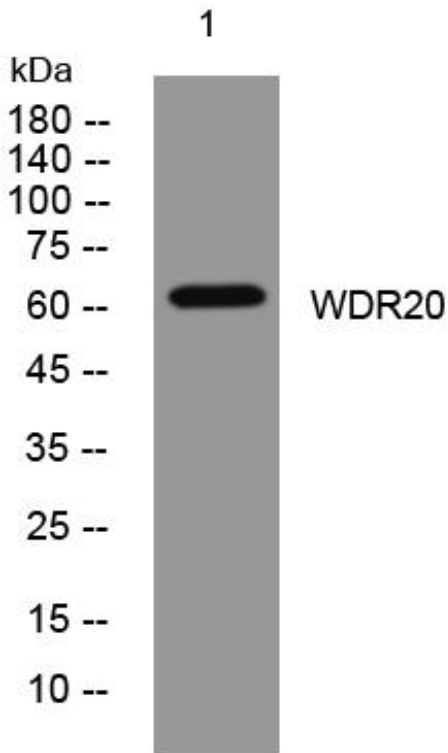
监督电话: 15950492658



Usage suggestions

This product can be used in immunological reaction related experiments. For more information, please consult technical personnel.

Products Images



Western Blot analysis of various cells using WDR20 mouse mAb

Nanjing BYabscience technology Co.,Ltd

网址: www.njbybio.com

官方热线: 025-5229-8998

监督电话: 15950492658