



NPRL3 mouse mAb

Catalog No	BYmab-08056
Isotype	IgG
Reactivity	Human; Mouse
Applications	WB
Gene Name	NPRL3 C16orf35 CGTHBA MARE
Protein Name	NPRL3
Immunogen	Synthesized peptide derived from human NPRL3 AA range: 461-511
Specificity	This antibody detects endogenous levels of NPRL3 at Human/Mouse
Formulation	Liquid in PBS containing 50% glycerol, 0.5% BSA and 0.170% sodium azide.
Source	Monoclonal, Mouse,IgG
Purification	The antibody was affinity-purified from mouse antiserum by affinity-chromatography using epitope-specific immunogen.
Dilution	WB 1:500-2000
Concentration	1 mg/ml
Purity	≥90%
Storage Stability	-20°C/1 year
Synonyms	Nitrogen permease regulator 3-like protein (-14 gene protein) (Alpha-globin regulatory element-containing gene protein) (Protein CGTHBA)
Observed Band	60kD
Cell Pathway	Lysosome membrane . Localization to lysosomes is amino acid-independent. .
Tissue Specificity	Widely expressed. Expressed in the frontal lobe cortex as well as in the temporal, parietal, and occipital lobes (PubMed:27173016, PubMed:26505888).
Function	caution:Ser-489 is missing in the human genome assembly but is present in all available mRNAs and ESTs.,similarity:Belongs to the UPF0171 family.,tissue specificity:Widely expressed.,
Background	The function of the encoded protein is not known. [provided by RefSeq, Aug 2011],
matters needing attention	Avoid repeated freezing and thawing!

Nanjing BYabscience technology Co.,Ltd

网址: www.njbybio.com

官方热线: 025-5229-8998

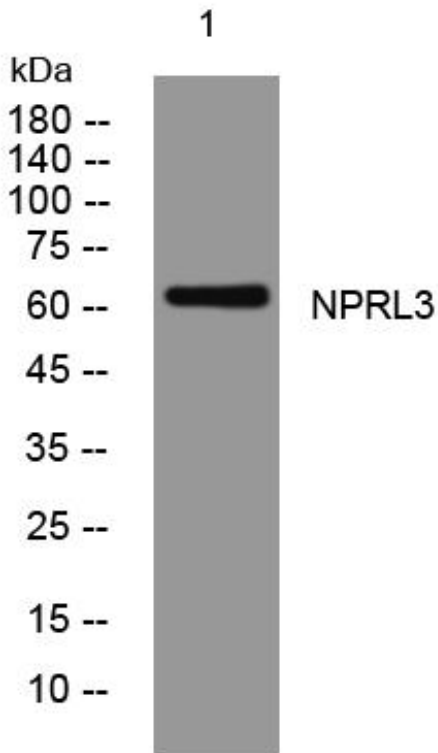
监督电话: 15950492658



Usage suggestions

This product can be used in immunological reaction related experiments. For more information, please consult technical personnel.

Products Images



Western Blot analysis of various cells using NPRL3 mouse mAb

Nanjing BYabscience technology Co.,Ltd

网址: www.njbybio.com

官方热线: 025-5229-8998

监督电话: 15950492658