



MEX3B mouse mAb

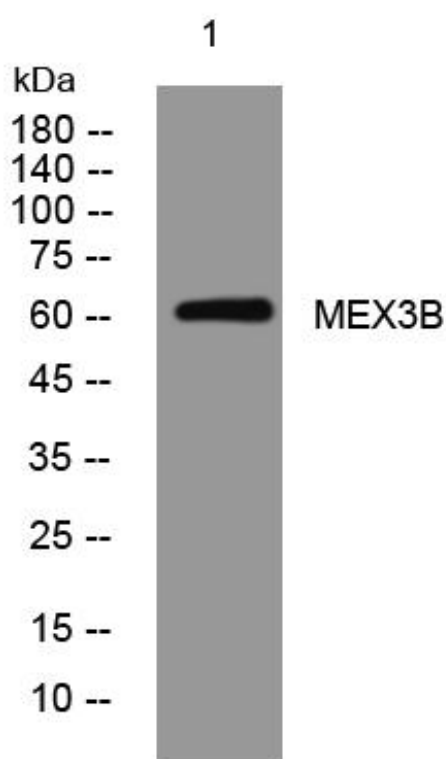
Catalog No	BYmab-08054
Isotype	IgG
Reactivity	Human; Mouse
Applications	WB
Gene Name	MEX3B KIAA2009 RKHD3 RNF195
Protein Name	MEX3B
Immunogen	Synthesized peptide derived from human MEX3B AA range: 434-484
Specificity	This antibody detects endogenous levels of MEX3B at Human/Mouse
Formulation	Liquid in PBS containing 50% glycerol, 0.5% BSA and 0.168% sodium azide.
Source	Monoclonal, Mouse,IgG
Purification	The antibody was affinity-purified from mouse antiserum by affinity-chromatography using epitope-specific immunogen.
Dilution	WB 1:500-2000
Concentration	1 mg/ml
Purity	≥90%
Storage Stability	-20°C/1 year
Synonyms	RNA-binding protein MEX3B (RING finger and KH domain-containing protein 3) (RING finger protein 195)
Observed Band	60kD
Cell Pathway	Nucleus . Cytoplasm . Cytoplasm, P-body . Cytoplasmic granule . Predominantly expressed in the cytoplasm and shuttles between the cytoplasm and the nucleus through the CRM1 export pathway. Localization to P-bodies is dependent on 14-3-3.
Tissue Specificity	Highest levels found in fetal brain and testis. Detected in the adult intestinal epithelium, specifically in goblet cell at protein level.
Function	domain: Binds RNA through its KH domains.,function: RNA-binding protein. May be involved in post-transcriptional regulatory mechanisms.,PTM: Phosphorylated.,similarity: Contains 1 RING-type zinc finger.,similarity: Contains 2 KH domains.,subcellular location: Predominantly expressed in the cytoplasm and shuttles between the cytoplasm and the nucleus through the CRM1 export pathway.,tissue specificity: Highest levels found in fetal brain and testis. Detected in the adult intestinal epithelium, specifically in goblet cell at protein level.,

Nanjing BYabscience technology Co.,Ltd



Background	This gene encodes an RNA-binding phosphoprotein that is part of the MEX3 (muscle excess 3) family of translational regulators. The encoded protein contains N-terminal nuclear export and nuclear localization signals and is exported from the cytoplasm to the nucleus. The protein binds to RNA via two KH domains and also colocalizes with MEX3A, Dcp1A decapping factor and Argonaute proteins within P (processing) bodies. [provided by RefSeq, Oct 2012],
matters needing attention	Avoid repeated freezing and thawing!
Usage suggestions	This product can be used in immunological reaction related experiments. For more information, please consult technical personnel.

Products Images



Western Blot analysis of various cells using MEX3B mouse mAb