



GGT2 mouse mAb

Catalog No	BYmab-08052
Isotype	IgG
Reactivity	Human;Rat;Mouse;
Applications	WB
Gene Name	GGT2
Protein Name	GGT2
Immunogen	Synthesized peptide derived from human GGT2 AA range: 89-139
Specificity	This antibody detects endogenous levels of GGT2 at Human
Formulation	Liquid in PBS containing 50% glycerol, 0.5% BSA and 0.166% sodium azide.
Source	Monoclonal, Mouse,IgG
Purification	The antibody was affinity-purified from mouse antiserum by affinity-chromatography using epitope-specific immunogen.
Dilution	WB 1:500-2000
Concentration	1 mg/ml
Purity	≥90%
Storage Stability	-20°C/1 year
Synonyms	Gamma-glutamyltranspeptidase 2 (GGT 2) (EC 2.3.2.2) (Gamma-glutamyltransferase 2) (Glutathione hydrolase 2) (EC 3.4.19.13) [Cleaved into: Gamma-glutamyltranspeptidase 2 heavy chain; Gamma-glutamyltranspeptidase 2 light chain]
Observed Band	60kD
Cell Pathway	Cytoplasm, perinuclear region . Endoplasmic reticulum . Co-localizes with calnexin in the endoplasmic reticulum.
Tissue Specificity	Highly expressed in fetal and adult kidney and liver.
Function	catalytic activity:(5-L-glutamyl)-peptide + an amino acid = peptide + 5-L-glutamyl amino acid.,disease:Defects in GGT1 are a cause of glutathionuria [MIM:231950]; also known as gamma-glutamyltranspeptidase deficiency. It is an autosomal recessive disease.,function:Initiates extracellular glutathione (GSH) breakdown, provides cells with a local cysteine supply and contributes to maintain intracellular GSH level. It is part of the cell antioxidant defense mechanism. Catalyzes the transfer of the glutamyl moiety of glutathione to amino acids and dipeptide acceptors. Alternatively, glutathione can be hydrolyzed to give Cys-Gly and

Nanjing BYabscience technology Co.,Ltd



gamma glutamate. Isoform 3 seems to be inactive.,function:Initiates extracellular glutathione (GSH) breakdown; catalyzes the transfer of the glutamyl moiety of glutathione to amino acids and dipeptide acceptors.,miscellaneous:Corresponds to the light chain of other

Background

GGT2 belongs to the gamma-glutamyltransferase (GGT; EC 2.3.2.2) gene family. GGT is a membrane-bound extracellular enzyme that cleaves gamma-glutamyl peptide bonds in glutathione and other peptides and transfers the gamma-glutamyl moiety to acceptors. GGT is also key to glutathione homeostasis because it provides substrates for glutathione synthesis (Heisterkamp et al., 2008 [PubMed 18357469]).[supplied by OMIM, Oct 2008],

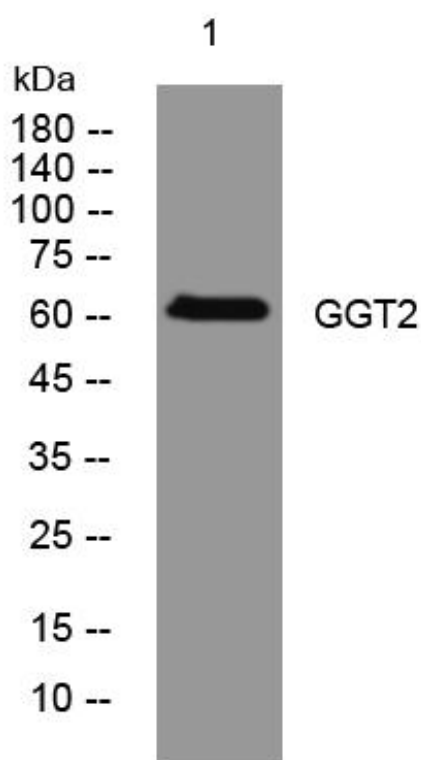
matters needing attention

Avoid repeated freezing and thawing!

Usage suggestions

This product can be used in immunological reaction related experiments. For more information, please consult technical personnel.

Products Images



Western Blot analysis of various cells using GGT2 mouse mAb