



SGPL1 mouse mAb

| | |
|---------------------------|--|
| Catalog No | BYmab-08044 |
| Isotype | IgG |
| Reactivity | Human; Mouse;Rat |
| Applications | WB |
| Gene Name | SGPL1 KIAA1252 |
| Protein Name | SGPL1 |
| Immunogen | Synthesized peptide derived from human SGPL1 AA range: 393-443 |
| Specificity | This antibody detects endogenous levels of SGPL1 at Human/Mouse/Rat |
| Formulation | Liquid in PBS containing 50% glycerol, 0.5% BSA and 0.158% sodium azide. |
| Source | Monoclonal, Mouse,IgG |
| Purification | The antibody was affinity-purified from mouse antiserum by affinity-chromatography using epitope-specific immunogen. |
| Dilution | WB 1:500-2000 |
| Concentration | 1 mg/ml |
| Purity | ≥90% |
| Storage Stability | -20°C/1 year |
| Synonyms | Sphingosine-1-phosphate lyase 1 (S1PL) (SP-lyase 1) (SPL 1) (hSPL) (EC 4.1.2.27) (Sphingosine-1-phosphate aldolase) |
| Observed Band | 60kD |
| Cell Pathway | Endoplasmic reticulum membrane ; Single-pass type III membrane protein ; Cytoplasmic side . |
| Tissue Specificity | Ubiquitously expressed (PubMed:11018465, PubMed:28165343). Expressed in fetal and adult adrenal gland (at protein level) (PubMed:28165343). |
| Function | catalytic activity:Sphinganine 1-phosphate = phosphoethanolamine + palmitaldehyde.,cofactor:Pyridoxal phosphate.,function:Cleaves phosphorylated sphingoid bases (PSBs), such as sphingosine-1-phosphate, into fatty aldehydes and phosphoethanolamine. Elevates stress-induced ceramide production and apoptosis.,pathway:Lipid metabolism; sphingolipid metabolism.,similarity:Belongs to the group II decarboxylase family. Sphingosine-1-phosphate lyase subfamily.,tissue specificity:Found in liver and kidney., |
| Background | |

Nanjing BYabscience technology Co.,Ltd

网址: www.njbybio.com

官方热线: 025-5229-8998

监督电话: 15950492658



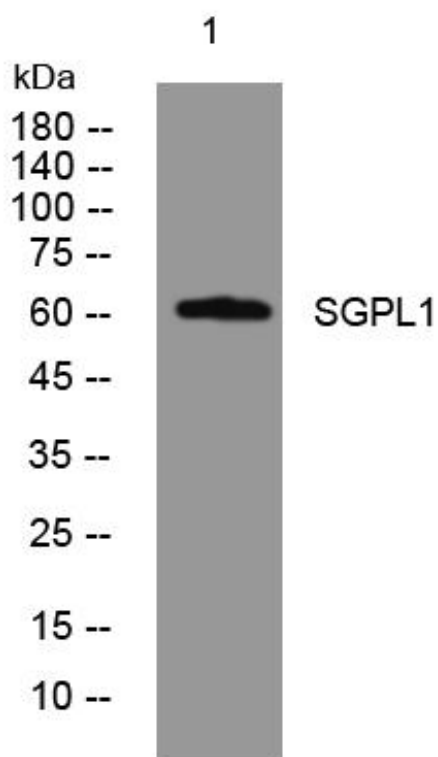
matters needing attention

Avoid repeated freezing and thawing!

Usage suggestions

This product can be used in immunological reaction related experiments. For more information, please consult technical personnel.

Products Images



Western Blot analysis of various cells using SGPL1 mouse mAb