



S13A5 mouse mAb

Catalog No	BYmab-08043
Isotype	IgG
Reactivity	Human; Mouse;Rat
Applications	WB
Gene Name	SLC13A5 NACT
Protein Name	S13A5
Immunogen	Synthesized peptide derived from human S13A5 AA range: 313-363
Specificity	This antibody detects endogenous levels of S13A5 at Human/Mouse/Rat
Formulation	Liquid in PBS containing 50% glycerol, 0.5% BSA and 0.157% sodium azide.
Source	Monoclonal, Mouse,IgG
Purification	The antibody was affinity-purified from mouse antiserum by affinity-chromatography using epitope-specific immunogen.
Dilution	WB 1:500-2000
Concentration	1 mg/ml
Purity	≥90%
Storage Stability	-20°C/1 year
Synonyms	Solute carrier family 13 member 5 (Na ⁺)/citrate cotransporter) (NaCT) (Sodium-coupled citrate transporter) (Sodium-dependent citrate transporter)
Observed Band	60kD
Cell Pathway	Cell membrane ; Multi-pass membrane protein .
Tissue Specificity	Expressed most predominantly in the liver, with moderate expression detectable in the brain and testis.
Function	function:High-affinity sodium/citrate cotransporter that mediates citrate entry into cells. The transport process is electrogenic; it is the trivalent form of citrate rather than the divalent form that is recognized as a substrate. May facilitate the utilization of circulating citrate for the generation of metabolic energy and for the synthesis of fatty acids and cholesterol.,similarity:Belongs to the SLC13A transporter (TC 2.A.47) family. NADC subfamily.,tissue specificity:Expressed most predominantly in the liver, with moderate expression detectable in the brain and testis.,
Background	This gene encodes a protein belonging to the solute carrier family 13 group of proteins. This family member is a sodium-dependent citrate cotransporter that

Nanjing BYabscience technology Co.,Ltd



may regulate metabolic processes. Mutations in this gene cause early infantile epileptic encephalopathy 25. Alternative splicing results in multiple transcript variants. [provided by RefSeq, Aug 2014],

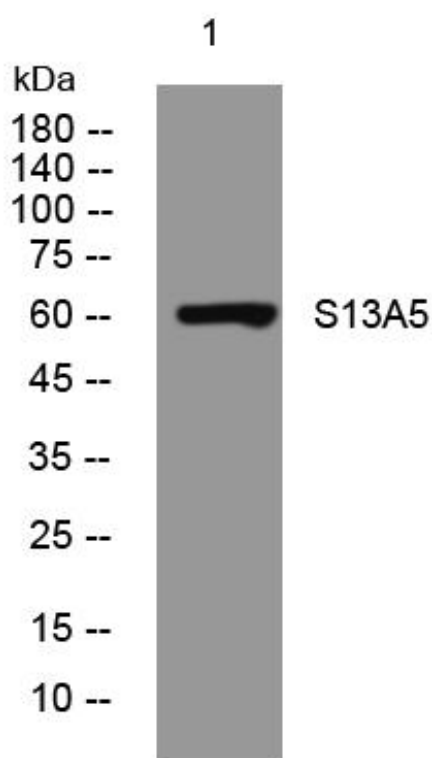
matters needing attention

Avoid repeated freezing and thawing!

Usage suggestions

This product can be used in immunological reaction related experiments. For more information, please consult technical personnel.

Products Images



Western Blot analysis of various cells using S13A5 mouse mAb