



1A1L2 mouse mAb

| | |
|---------------------------|---|
| Catalog No | BYmab-08038 |
| Isotype | IgG |
| Reactivity | Human; Mouse |
| Applications | WB |
| Gene Name | ACCSL |
| Protein Name | 1A1L2 |
| Immunogen | Synthesized peptide derived from human 1A1L2 AA range: 453-503 |
| Specificity | This antibody detects endogenous levels of 1A1L2 at Human/Mouse |
| Formulation | Liquid in PBS containing 50% glycerol, 0.5% BSA and 0.152% sodium azide. |
| Source | Monoclonal, Mouse,IgG |
| Purification | The antibody was affinity-purified from mouse antiserum by affinity-chromatography using epitope-specific immunogen. |
| Dilution | WB 1:500-2000 |
| Concentration | 1 mg/ml |
| Purity | ≥90% |
| Storage Stability | -20°C/1 year |
| Synonyms | 1-aminocyclopropane-1-carboxylate synthase-like protein 2 (ACC synthase-like protein 2) |
| Observed Band | 60kD |
| Cell Pathway | |
| Tissue Specificity | |
| Function | caution:Similar to plant 1-aminocyclopropane-1-carboxylate synthases but lacks a number of residues which are necessary for activity.,similarity:Belongs to the class-I pyridoxal-phosphate-dependent aminotransferase family., |
| Background | |
| matters needing attention | Avoid repeated freezing and thawing! |

Nanjing BYabscience technology Co.,Ltd

网址: www.njbybio.com

官方热线: 025-5229-8998

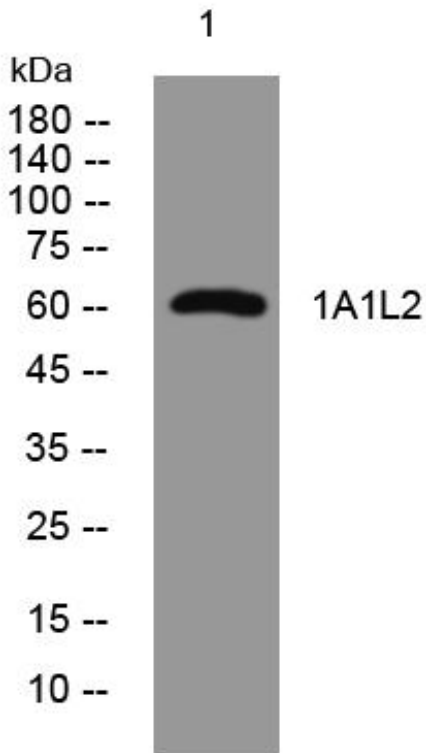
监督电话: 15950492658



Usage suggestions

This product can be used in immunological reaction related experiments. For more information, please consult technical personnel.

Products Images



Western Blot analysis of various cells using 1A1L2 mouse mAb

Nanjing BYabs science technology Co.,Ltd

网址: www.njbybio.com

官方热线: 025-5229-8998

监督电话: 15950492658