



TAPT1 mouse mAb

Catalog No	BYmab-08035
Isotype	IgG
Reactivity	Human; Mouse
Applications	WB
Gene Name	TAPT1 CMVFR
Protein Name	TAPT1
Immunogen	Synthesized peptide derived from human TAPT1 AA range: 295-345
Specificity	This antibody detects endogenous levels of TAPT1 at Human/Mouse
Formulation	Liquid in PBS containing 50% glycerol, 0.5% BSA and 0.149% sodium azide.
Source	Monoclonal, Mouse,IgG
Purification	The antibody was affinity-purified from mouse antiserum by affinity-chromatography using epitope-specific immunogen.
Dilution	WB 1:500-2000
Concentration	1 mg/ml
Purity	≥90%
Storage Stability	-20°C/1 year
Synonyms	Transmembrane anterior posterior transformation protein 1 homolog (Cytomegalovirus partial fusion receptor)
Observed Band	60kD
Cell Pathway	Cytoplasm, cytoskeleton, microtubule organizing center, centrosome . Cytoplasm, cytoskeleton, cilium basal body . Membrane ; Multi-pass membrane protein .
Tissue Specificity	Embryo,Lung,Testis,
Function	function:May act as a downstream effector of HOXC8 possibly by transducing or transmitting extracellular information required for axial skeletal patterning during development (By similarity). In case of infection, may act as a fusion receptor for cytomegalovirus (HCMV) strain AD169.,similarity:Belongs to the TAPT1 family.,
Background	This gene encodes a highly conserved, putative transmembrane protein. A mutation in the mouse ortholog of this gene results in homeotic, posterior-to-anterior transformations of the axial skeleton which are similar to the phenotype of mouse homeobox C8 gene mutants. This gene is proposed to function downstream of homeobox C8 to transduce extracellular patterning information during axial skeleton development. An alternatively spliced transcript

Nanjing BYabscience technology Co.,Ltd



variant encoding a substantially different isoform has been described, but its biological validity has not been determined. [provided by RefSeq, Jul 2008],

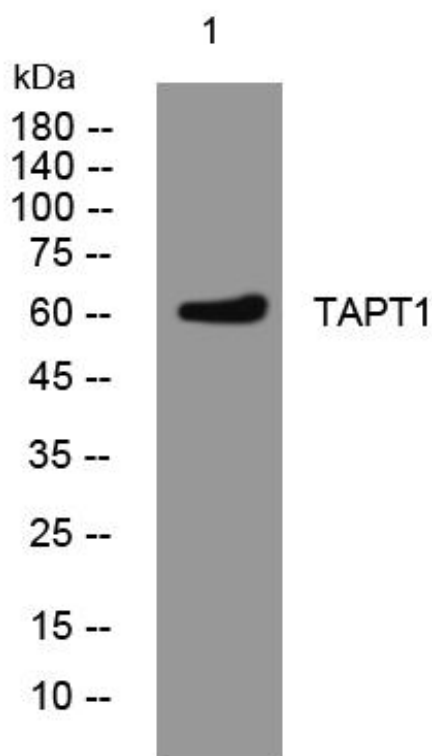
matters needing attention

Avoid repeated freezing and thawing!

Usage suggestions

This product can be used in immunological reaction related experiments. For more information, please consult technical personnel.

Products Images



Western Blot analysis of various cells using TAPT1 mouse mAb