



# REPI1 mouse mAb

Catalog No	BYmab-08034
Isotype	IgG
Reactivity	Human; Mouse;Rat
Applications	WB
Gene Name	REPIN1 RIP60 ZNF464
Protein Name	REPI1
Immunogen	Synthesized peptide derived from human REPI1 AA range: 10-60
Specificity	This antibody detects endogenous levels of REPI1 at Human/Mouse/Rat
Formulation	Liquid in PBS containing 50% glycerol, 0.5% BSA and 0.148% sodium azide.
Source	Monoclonal, Mouse,IgG
Purification	The antibody was affinity-purified from mouse antiserum by affinity-chromatography using epitope-specific immunogen.
Dilution	WB 1:500-2000
Concentration	1 mg/ml
Purity	≥90%
Storage Stability	-20°C/1 year
Synonyms	Replication initiator 1 (60 kDa origin-specific DNA-binding protein) (60 kDa replication initiation region protein) (ATT-binding protein) (DHFR oribeta-binding protein RIP60) (Zinc finger protein 464)
Observed Band	60kD
Cell Pathway	Nucleus .
Tissue Specificity	Cervix carcinoma,Eye,Muscle,
Function	function:Sequence-specific double-stranded DNA-binding protein required for initiation of chromosomal DNA replication. Binds on 5'-ATT-3' reiterated sequences downstream of the origin of bidirectional replication (OBR) and a second, homologous ATT sequence of opposite orientation situated within the OBR zone. Facilitates DNA bending.,similarity:Contains 15 C2H2-type zinc fingers.,subunit:Homodimers and homomultimers. Found in a complex with RIP60 and RIP100.,

## Background

Nanjing BYabscience technology Co.,Ltd

网址: [www.njbybio.com](http://www.njbybio.com)

官方热线: 025-5229-8998

监督电话: 15950492658



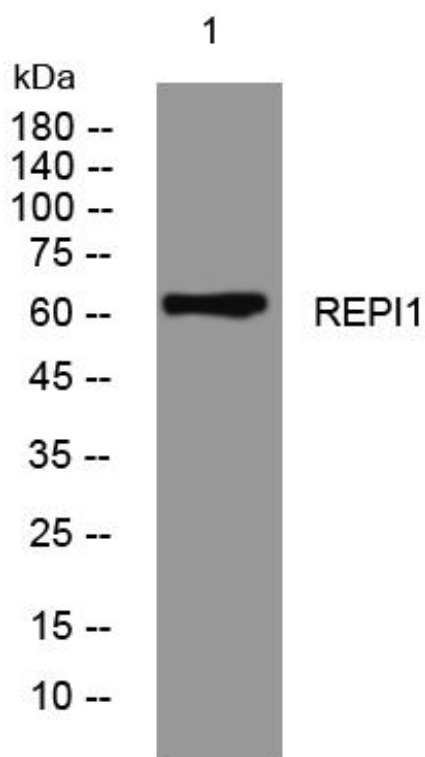
**matters needing attention**

Avoid repeated freezing and thawing!

**Usage suggestions**

This product can be used in immunological reaction related experiments. For more information, please consult technical personnel.

## Products Images



Western Blot analysis of various cells using REPI1 mouse mAb