



PGM5 mouse mAb

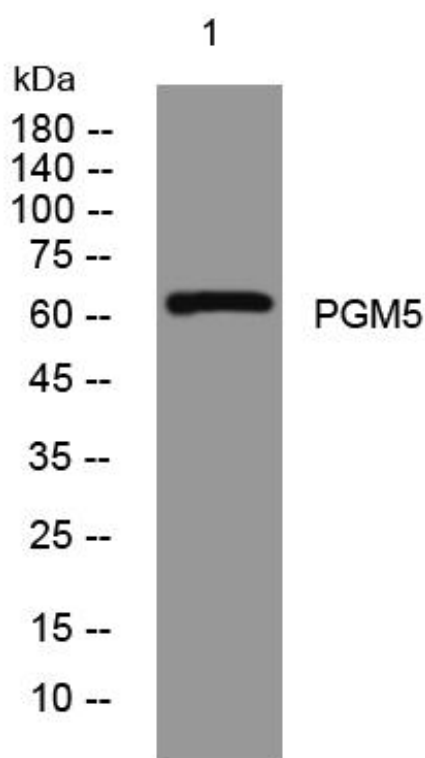
Catalog No	BYmab-08031
Isotype	IgG
Reactivity	Human; Mouse
Applications	WB
Gene Name	PGM5 PGMRP
Protein Name	PGM5
Immunogen	Synthesized peptide derived from human PGM5 AA range: 357-407
Specificity	This antibody detects endogenous levels of PGM5 at Human/Mouse
Formulation	Liquid in PBS containing 50% glycerol, 0.5% BSA and 0.145% sodium azide.
Source	Monoclonal, Mouse,IgG
Purification	The antibody was affinity-purified from mouse antiserum by affinity-chromatography using epitope-specific immunogen.
Dilution	WB 1:500-2000
Concentration	1 mg/ml
Purity	≥90%
Storage Stability	-20°C/1 year
Synonyms	Phosphoglucomutase-like protein 5 (Aciculin) (Phosphoglucomutase-related protein) (PGM-RP)
Observed Band	60kD
Cell Pathway	Cell junction, adherens junction . Cytoplasm, cytoskeleton . Cell membrane, sarcolemma . Concentrated in focal contacts at the ends of actin bundles, and associated with actin filaments. .
Tissue Specificity	Detected in smooth and cardiac muscle at high levels and in skeletal muscle at low level. Present in other tissues due to vascular or other smooth muscle component. Low levels are present in liver, kidney, skin and brain (at protein level).
Function	cofactor: Binds 1 magnesium ion per subunit .,function: Component of adherens-type cell-cell and cell-matrix junctions. Lacks phosphoglucomutase activity.,similarity: Belongs to the phosphohexose mutase family.,subcellular location: Adherens-type cellular junctions.,subunit: Interacts with cytoskeletal proteins dystrophin and utrophin.,tissue specificity: Expressed in smooth and cardiac muscle at high levels and in skeletal muscle at low level. Present in other tissues due to vascular or other smooth muscle component.,

Nanjing BYabscience technology Co.,Ltd



Background	Phosphoglucomutases (EC 5.2.2.2.), such as PGM5, are phosphotransferases involved in interconversion of glucose-1-phosphate and glucose-6-phosphate. PGM activity is essential in formation of carbohydrates from glucose-6-phosphate and in formation of glucose-6-phosphate from galactose and glycogen (Edwards et al., 1995 [PubMed 8586438]).[supplied by OMIM, Mar 2008],
matters needing attention	Avoid repeated freezing and thawing!
Usage suggestions	This product can be used in immunological reaction related experiments. For more information, please consult technical personnel.

Products Images



Western Blot analysis of various cells using PGM5 mouse mAb