



# LCTL mouse mAb

Catalog No	BYmab-08029
Isotype	IgG
Reactivity	Human; Mouse
Applications	WB
Gene Name	LCTL KLPH UNQ3022/PRO9820
Protein Name	LCTL
Immunogen	Synthesized peptide derived from human LCTL AA range: 450-500
Specificity	This antibody detects endogenous levels of LCTL at Human/Mouse
Formulation	Liquid in PBS containing 50% glycerol, 0.5% BSA and 0.143% sodium azide.
Source	Monoclonal, Mouse,IgG
Purification	The antibody was affinity-purified from mouse antiserum by affinity-chromatography using epitope-specific immunogen.
Dilution	WB 1:500-2000
Concentration	1 mg/ml
Purity	≥90%
Storage Stability	-20°C/1 year
Synonyms	Lactase-like protein (Klotho/lactase-phlorizin hydrolase-related protein)
Observed Band	60kD
Cell Pathway	Endoplasmic reticulum membrane ; Single-pass membrane protein .
Tissue Specificity	
Function	caution:Probably inactive as a glycosidase since it lacks the essential active site Glu at position 201.,similarity:Belongs to the glycosyl hydrolase 1 family.,similarity:Belongs to the glycosyl hydrolase 1 family. Klotho subfamily.,
Background	This gene encodes a member of family 1 glycosidases. Glycosidases are enzymes that hydrolyze glycosidic bonds and are classified into families based on primary amino acid sequence. Most members of family 1 have two conserved glutamic acid residues, which are required for enzymatic activity. The mouse ortholog of this protein has been characterized and has a domain structure of an N-terminal signal peptide, glycosidase domain, transmembrane domain, and a short cytoplasmic tail. It lacks one of the conserved glutamic acid residues important for catalysis, and its function remains to be determined (PMID:

Nanjing BYabscience technology Co.,Ltd



12084582). Alternative splicing results in multiple transcript variants. [provided by RefSeq, Jun 2013],

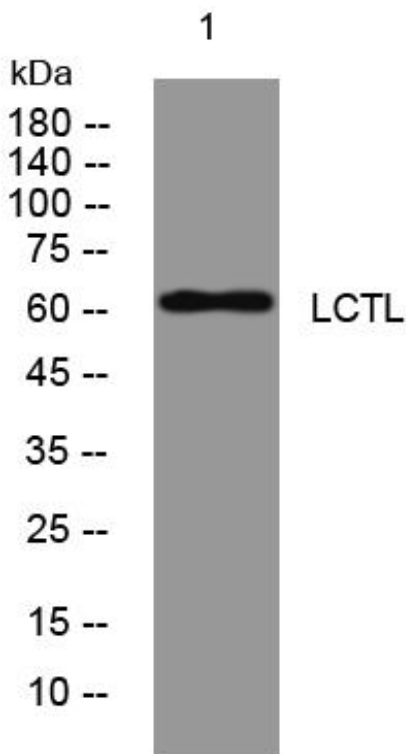
**matters needing attention**

Avoid repeated freezing and thawing!

**Usage suggestions**

This product can be used in immunological reaction related experiments. For more information, please consult technical personnel.

## Products Images



Western Blot analysis of various cells using LCTL mouse mAb

Nanjing BYabs science technology Co.,Ltd

网址: [www.njbybio.com](http://www.njbybio.com)

官方热线: 025-5229-8998

监督电话: 15950492658