



INSM2 mouse mAb

Catalog No	BYmab-08019
Isotype	IgG
Reactivity	Human; Mouse
Applications	WB
Gene Name	INSM2 IA6 Nbla106
Protein Name	INSM2
Immunogen	Synthesized peptide derived from human INSM2 AA range: 8-58
Specificity	This antibody detects endogenous levels of INSM2 at Human/Mouse
Formulation	Liquid in PBS containing 50% glycerol, 0.5% BSA and 0.133% sodium azide.
Source	Monoclonal, Mouse,IgG
Purification	The antibody was affinity-purified from mouse antiserum by affinity-chromatography using epitope-specific immunogen.
Dilution	WB 1:500-2000
Concentration	1 mg/ml
Purity	≥90%
Storage Stability	-20°C/1 year
Synonyms	Insulinoma-associated protein 2 (Zinc finger protein IA-6)
Observed Band	60kD
Cell Pathway	Cytoplasm . Nucleus .
Tissue Specificity	Expressed in heart, liver, skeletal muscle, kidney and pancreas, and, to a lesser extent, in brain, lung and spleen. In the pancreas, expressed in islet cells, including insulin- and glucagon-producing alpha- and beta-cells, but not in acinar cells (at protein level). Detected in adrenal glands, particularly in the deeper layer of the cortex (at protein level).
Function	function:May function as a growth suppressor or tumor suppressor in liver cells and in certain neurons.,similarity:Contains 5 C2H2-type zinc fingers.,
Background	
matters needing attention	Avoid repeated freezing and thawing!

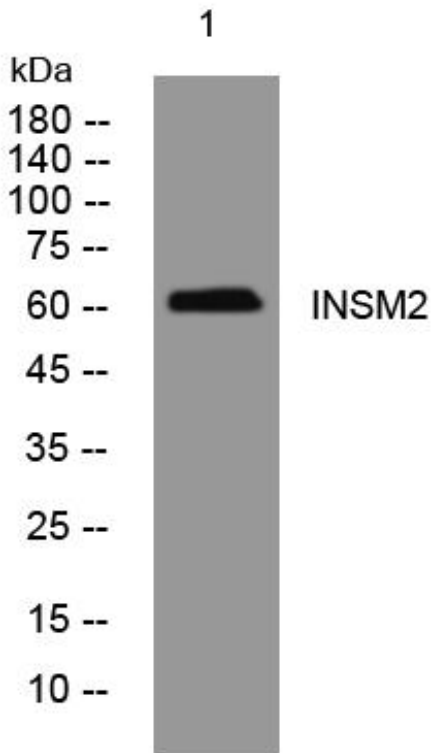
Nanjing BYabscience technology Co.,Ltd



Usage suggestions

This product can be used in immunological reaction related experiments. For more information, please consult technical personnel.

Products Images



Western Blot analysis of various cells using INSM2 mouse mAb

Nanjing BYabscience technology Co.,Ltd

网址: www.njbybio.com

官方热线: 025-5229-8998

监督电话: 15950492658