



# FBXW5 mouse mAb

Catalog No	BYmab-08018
Isotype	IgG
Reactivity	Human; Mouse;Rat
Applications	WB
Gene Name	FBXW5 FBW5 PP3971
Protein Name	FBXW5
Immunogen	Synthesized peptide derived from human FBXW5 AA range: 319-369
Specificity	This antibody detects endogenous levels of FBXW5 at Human/Mouse/Rat
Formulation	Liquid in PBS containing 50% glycerol, 0.5% BSA and 0.132% sodium azide.
Source	Monoclonal, Mouse,IgG
Purification	The antibody was affinity-purified from mouse antiserum by affinity-chromatography using epitope-specific immunogen.
Dilution	WB 1:500-2000
Concentration	1 mg/ml
Purity	≥90%
Storage Stability	-20°C/1 year
Synonyms	F-box/WD repeat-containing protein 5 (F-box and WD-40 domain-containing protein 5)
Observed Band	60kD
Cell Pathway	Cytoplasm .
Tissue Specificity	Brain,Cervix,Colon,Ovary,Placenta,Skin,Testis,
Function	function:Substrate-recognition component of the SCF (SKP1-CUL1-F-box protein)-type E3 ubiquitin ligase complex.,similarity:Contains 1 F-box domain.,similarity:Contains 3 WD repeats.,subunit:Interacts with SKP1A and CUL1.,
Background	This gene encodes a member of the F-box protein family, members of which are characterized by an approximately 40 amino acid motif, the F-box. The F-box proteins constitute one of the four subunits of ubiquitin protein ligase complex called SCFs (SKP1-cullin-F-box), which function in phosphorylation-dependent ubiquitination. The F-box proteins are divided into three classes: Fbws containing WD-40 domains, Fbls containing leucine-rich repeats, and Fbxs containing either

Nanjing BYabscience technology Co.,Ltd



different protein-protein interaction modules or no recognizable motifs. The protein encoded by this gene contains WD-40 domains, in addition to an F-box motif, so it belongs to the Fbw class. Alternatively spliced transcript variants encoding distinct isoforms have been identified for this gene, however, they were found to be nonsense-mediated mRNA decay (NMD) candidates, hence not represented. [provided by RefSeq, Jul 2008],

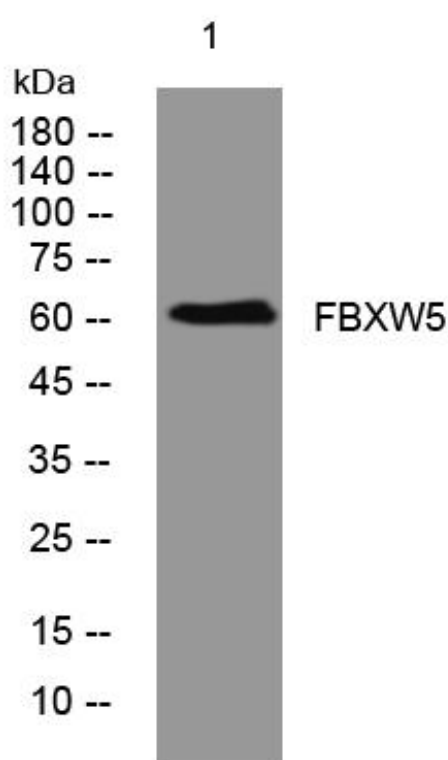
**matters needing attention**

Avoid repeated freezing and thawing!

**Usage suggestions**

This product can be used in immunological reaction related experiments. For more information, please consult technical personnel.

## Products Images



Western Blot analysis of various cells using FBXW5 mouse mAb