



WSCD2 mouse mAb

Catalog No	BYmab-08016
Isotype	IgG
Reactivity	Human; Mouse
Applications	WB
Gene Name	WSCD2 KIAA0789
Protein Name	WSCD2
Immunogen	Synthesized peptide derived from human WSCD2 AA range: 253-303
Specificity	This antibody detects endogenous levels of WSCD2 at Human/Mouse
Formulation	Liquid in PBS containing 50% glycerol, 0.5% BSA and 0.130% sodium azide.
Source	Monoclonal, Mouse,IgG
Purification	The antibody was affinity-purified from mouse antiserum by affinity-chromatography using epitope-specific immunogen.
Dilution	WB 1:500-2000
Concentration	1 mg/ml
Purity	≥90%
Storage Stability	-20°C/1 year
Synonyms	WSC domain-containing protein 2
Observed Band	60kD
Cell Pathway	Membrane ; Single-pass membrane protein .
Tissue Specificity	Brain,Urinary bladder,
Function	sequence caution:Contaminating sequence. The N-terminus may be contaminated with vector sequence.,similarity:Belongs to the WSCD family.,similarity:Contains 2 WSC domains.,
Background	
matters needing attention	Avoid repeated freezing and thawing!

Nanjing BYabscience technology Co.,Ltd

网址: www.njbybio.com

官方热线: 025-5229-8998

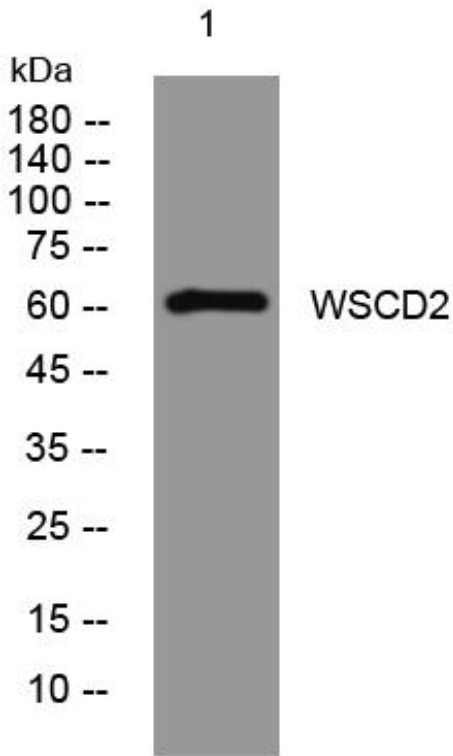
监督电话: 15950492658



Usage suggestions

This product can be used in immunological reaction related experiments. For more information, please consult technical personnel.

Products Images



Western Blot analysis of various cells using WSCD2 mouse mAb

Nanjing BYabscience technology Co.,Ltd

网址: www.njbybio.com

官方热线: 025-5229-8998

监督电话: 15950492658