



ZN211 mouse mAb

Catalog No	BYmab-08009
Isotype	IgG
Reactivity	Human;Rat;Mouse;
Applications	WB
Gene Name	ZNF211
Protein Name	ZN211
Immunogen	Synthesized peptide derived from human ZN211 AA range: 229-279
Specificity	This antibody detects endogenous levels of ZN211 at Human
Formulation	Liquid in PBS containing 50% glycerol, 0.5% BSA and 0.123% sodium azide.
Source	Monoclonal, Mouse,IgG
Purification	The antibody was affinity-purified from mouse antiserum by affinity-chromatography using epitope-specific immunogen.
Dilution	WB 1:500-2000
Concentration	1 mg/ml
Purity	≥90%
Storage Stability	-20°C/1 year
Synonyms	Zinc finger protein 211 (Zinc finger protein C2H2-25)
Observed Band	60kD
Cell Pathway	Nucleus .
Tissue Specificity	Blood,Brain,Chondrosarcoma,Endothelial cell,Hippocampus,Skin,Tongue,Uterus,
Function	caution:The sequence shown here is derived from an Ensembl automatic analysis pipeline and should be considered as preliminary data.,function:May be involved in transcriptional regulation.,sequence caution:Contaminating sequence. Potential poly-A sequence.,similarity:Belongs to the krueppel C2H2-type zinc-finger protein family.,similarity:Contains 1 KRAB domain.,similarity:Contains 12 C2H2-type zinc fingers.,
Background	This gene encodes a protein containing a Kruppel-associated box domain and multiple zinc finger domains. This protein may play a role in developmental processes. Alternative splicing results in multiple transcript variants. [provided by RefSeq, Mar 2014],

Nanjing BYabscience technology Co.,Ltd

网址: www.njbybio.com

官方热线: 025-5229-8998

监督电话: 15950492658



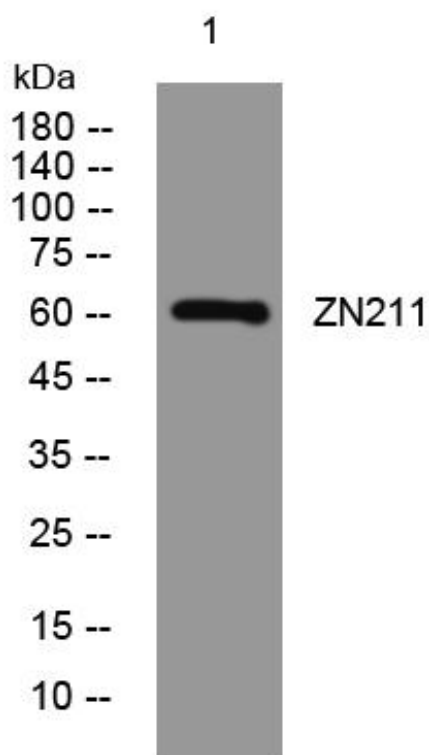
matters needing attention

Avoid repeated freezing and thawing!

Usage suggestions

This product can be used in immunological reaction related experiments. For more information, please consult technical personnel.

Products Images



Western Blot analysis of various cells using ZN211 mouse mAb