



EAA4 mouse mAb

Catalog No	BYmab-08004
Isotype	IgG
Reactivity	Human; Mouse;Rat
Applications	WB
Gene Name	SLC1A6 EAAT4
Protein Name	EAA4
Immunogen	Synthesized peptide derived from human EAA4 AA range: 320-370
Specificity	This antibody detects endogenous levels of EAA4 at Human/Mouse/Rat
Formulation	Liquid in PBS containing 50% glycerol, 0.5% BSA and 0.118% sodium azide.
Source	Monoclonal, Mouse,IgG
Purification	The antibody was affinity-purified from mouse antiserum by affinity-chromatography using epitope-specific immunogen.
Dilution	WB 1:500-2000
Concentration	1 mg/ml
Purity	≥90%
Storage Stability	-20°C/1 year
Synonyms	Excitatory amino acid transporter 4 (Sodium-dependent glutamate/aspartate transporter) (Solute carrier family 1 member 6)
Observed Band	60kD
Cell Pathway	Cell membrane ; Multi-pass membrane protein .
Tissue Specificity	Brain. Expressed densely and selectively in cell bodies of Purkinje cells.
Function	function:Transports L-glutamate and also L- and D-aspartate. Seems to act as a symport by cotransporting sodium.,similarity:Belongs to the sodium:dicarboxylate (SDF) symporter (TC 2.A.23) family.,tissue specificity:Brain. Expressed densely and selectively in cell bodies of Purkinje cells.,
Background	
matters needing attention	Avoid repeated freezing and thawing!

Nanjing BYabscience technology Co.,Ltd

网址: www.njbybio.com

官方热线: 025-5229-8998

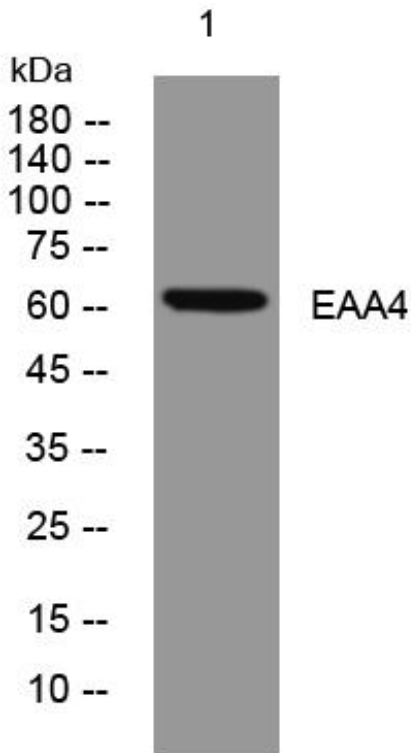
监督电话: 15950492658



Usage suggestions

This product can be used in immunological reaction related experiments. For more information, please consult technical personnel.

Products Images



Western Blot analysis of various cells using EAA4 mouse mAb

Nanjing BYabscience technology Co.,Ltd

网址: www.njbybio.com

官方热线: 025-5229-8998

监督电话: 15950492658