



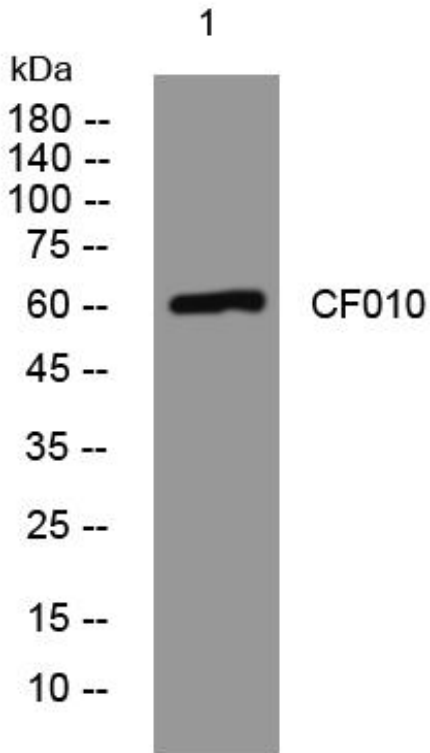
## CF010 mouse mAb

Catalog No	BYmab-07992
Isotype	IgG
Reactivity	Human;Rat;Mouse;
Applications	WB
Gene Name	C6orf10
Protein Name	CF010
Immunogen	Synthesized peptide derived from human CF010 AA range: 429-479
Specificity	This antibody detects endogenous levels of CF010 at Human
Formulation	Liquid in PBS containing 50% glycerol, 0.5% BSA and 0.106% sodium azide.
Source	Monoclonal, Mouse,IgG
Purification	The antibody was affinity-purified from mouse antiserum by affinity-chromatography using epitope-specific immunogen.
Dilution	WB 1:500-2000
Concentration	1 mg/ml
Purity	≥90%
Storage Stability	-20°C/1 year
Synonyms	Uncharacterized protein C6orf10
Observed Band	60kD
Cell Pathway	Membrane ; Multi-pass membrane protein .
Tissue Specificity	Brain,Sperm,
Function	
Background	
matters needing attention	Avoid repeated freezing and thawing!
Usage suggestions	This product can be used in immunological reaction related experiments. For more information, please consult technical personnel.

Nanjing BYabscience technology Co.,Ltd



## Products Images



Western Blot analysis of various cells using CF010 mouse mAb

Nanjing BYabs science technology Co.,Ltd

网址: [www.njbybio.com](http://www.njbybio.com)

官方热线: 025-5229-8998

监督电话: 15950492658