



CC155 mouse mAb

Catalog No	BYmab-07980
Isotype	IgG
Reactivity	Human;Rat;Mouse;
Applications	WB
Gene Name	CCDC155
Protein Name	CC155
Immunogen	Synthesized peptide derived from human CC155 AA range: 299-349
Specificity	This antibody detects endogenous levels of CC155 at Human
Formulation	Liquid in PBS containing 50% glycerol, 0.5% BSA and 0.94% sodium azide.
Source	Monoclonal, Mouse,IgG
Purification	The antibody was affinity-purified from mouse antiserum by affinity-chromatography using epitope-specific immunogen.
Dilution	WB 1:500-2000
Concentration	1 mg/ml
Purity	≥90%
Storage Stability	-20°C/1 year
Synonyms	Coiled-coil domain-containing protein 155
Observed Band	60kD
Cell Pathway	Nucleus outer membrane ; Single-pass type IV membrane protein ; Cytoplasmic side . Nucleus . Chromosome, telomere . Localized exclusively at telomeres from the leptotene to diplotene stages. Colocalizes with SUN2 at sites of telomere attachment in meiocytes. At oocyte MI stage localized around the spindle, at MII stage localized to the spindle poles. .
Tissue Specificity	Brain,Testis,
Function	
Background	
matters needing attention	Avoid repeated freezing and thawing!

Nanjing BYabscience technology Co.,Ltd

网址: www.njbybio.com

官方热线: 025-5229-8998

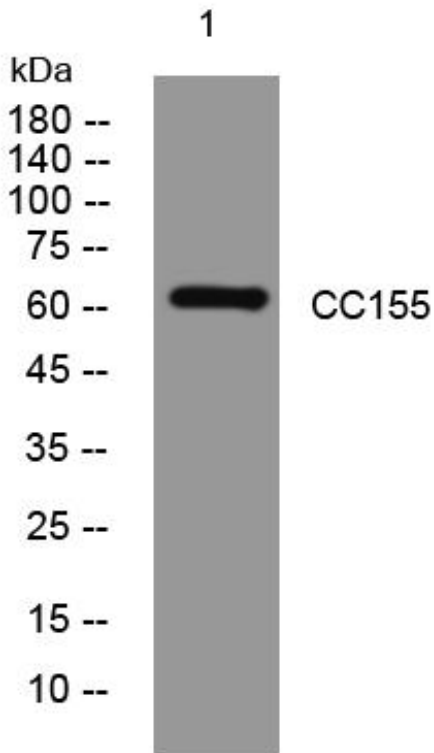
监督电话: 15950492658



Usage suggestions

This product can be used in immunological reaction related experiments. For more information, please consult technical personnel.

Products Images



Western Blot analysis of various cells using CC155 mouse mAb

Nanjing BYabscience technology Co.,Ltd

网址: www.njbybio.com

官方热线: 025-5229-8998

监督电话: 15950492658