



KY mouse mAb

Catalog No	BYmab-07974
Isotype	IgG
Reactivity	Human; Mouse
Applications	WB
Gene Name	KY
Protein Name	KY
Immunogen	Synthesized peptide derived from human KY AA range: 510-560
Specificity	This antibody detects endogenous levels of KY at Human/Mouse
Formulation	Liquid in PBS containing 50% glycerol, 0.5% BSA and 0.88% sodium azide.
Source	Monoclonal, Mouse,IgG
Purification	The antibody was affinity-purified from mouse antiserum by affinity-chromatography using epitope-specific immunogen.
Dilution	WB 1:500-2000
Concentration	1 mg/ml
Purity	≥90%
Storage Stability	-20°C/1 year
Synonyms	Kyphoscoliosis peptidase (EC 3.4.-.-)
Observed Band	60kD
Cell Pathway	Cytoplasm, cytoskeleton . Cytoplasm, myofibril, sarcomere, Z line .
Tissue Specificity	Highly expressed in skeletal muscle.
Function	function:Probable cytoskeleton-associated protease required for normal muscle growth. Involved in function, maturation and stabilization of the neuromuscular junction. May act by cleaving muscle-specific proteins such as FLNC.,similarity:Belongs to the transglutaminase-like superfamily.,subunit:Interacts with FLNC.,
Background	
matters needing attention	Avoid repeated freezing and thawing!

Nanjing BYabscience technology Co.,Ltd

网址: www.njbybio.com

官方热线: 025-5229-8998

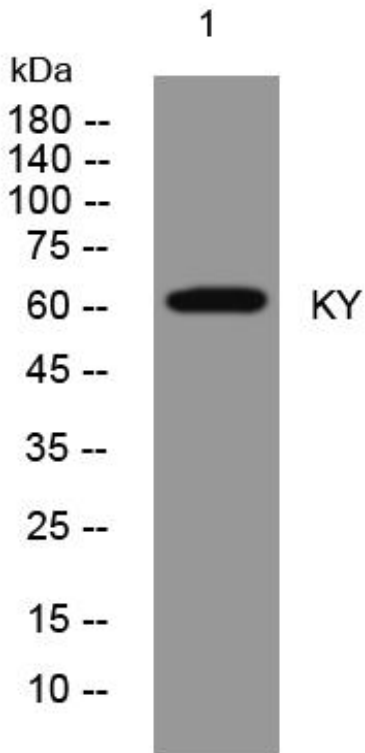
监督电话: 15950492658



Usage suggestions

This product can be used in immunological reaction related experiments. For more information, please consult technical personnel.

Products Images



Western Blot analysis of various cells using KY mouse mAb

Nanjing BYabscience technology Co.,Ltd

网址: www.njbybio.com

官方热线: 025-5229-8998

监督电话: 15950492658