



# DMRT2 mouse mAb

Catalog No	BYmab-07971
Isotype	IgG
Reactivity	Human;Rat;Mouse;
Applications	WB
Gene Name	DMRT2 DSXL2
Protein Name	DMRT2
Immunogen	Synthesized peptide derived from human DMRT2 AA range: 315-365
Specificity	This antibody detects endogenous levels of DMRT2 at Human
Formulation	Liquid in PBS containing 50% glycerol, 0.5% BSA and 0.85% sodium azide.
Source	Monoclonal, Mouse,IgG
Purification	The antibody was affinity-purified from mouse antiserum by affinity-chromatography using epitope-specific immunogen.
Dilution	WB 1:500-2000
Concentration	1 mg/ml
Purity	≥90%
Storage Stability	-20°C/1 year
Synonyms	Doublesex- and mab-3-related transcription factor 2 (Doublesex-like 2 protein) (DSXL-2)
Observed Band	60kD
Cell Pathway	Nucleus .
Tissue Specificity	Expressed in testis, kidney and skeletal muscle.
Function	similarity:Belongs to the DMRT family.,similarity:Contains 1 DM DNA-binding domain.,tissue specificity:Expressed in testis, kidney and skeletal muscle.,
Background	The protein encoded by this gene belongs to the DMRT gene family, sharing a DM DNA-binding domain with Drosophila &apos;doublesex&apos; (dsx) and C. elegans mab3, genes involved in sex determination in these organisms. Also, this gene is located in a region of the human genome (chromosome 9p24.3) associated with gonadal dysgenesis and XY sex reversal. Hence this gene is one of the candidates for sex-determining gene(s) on chr 9. [provided by RefSeq, Apr 2010],

Nanjing BYabscience technology Co.,Ltd

网址: [www.njbybio.com](http://www.njbybio.com)

官方热线: 025-5229-8998

监督电话: 15950492658



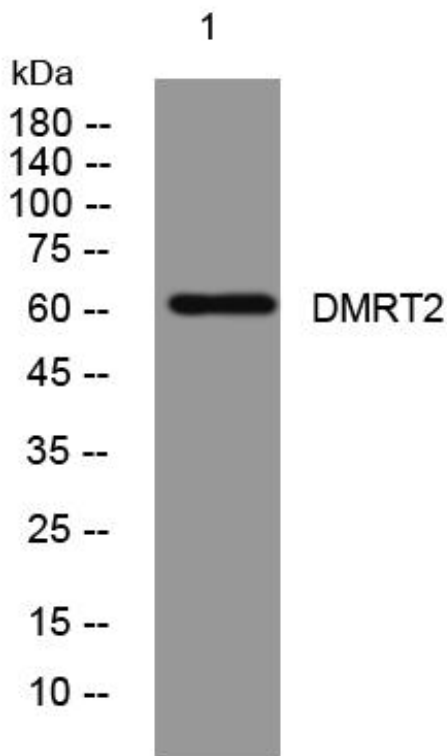
**matters needing attention**

Avoid repeated freezing and thawing!

**Usage suggestions**

This product can be used in immunological reaction related experiments. For more information, please consult technical personnel.

## Products Images



Western Blot analysis of various cells using DMRT2 mouse mAb