



RSPH3 mouse mAb

Catalog No	BYmab-07964
Isotype	IgG
Reactivity	Human;Rat;Mouse;
Applications	WB
Gene Name	RSPH3 RSHL2 RSP3
Protein Name	RSPH3
Immunogen	Synthesized peptide derived from human RSPH3 AA range: 15-65
Specificity	This antibody detects endogenous levels of RSPH3 at Human
Formulation	Liquid in PBS containing 50% glycerol, 0.5% BSA and 0.78% sodium azide.
Source	Monoclonal, Mouse,IgG
Purification	The antibody was affinity-purified from mouse antiserum by affinity-chromatography using epitope-specific immunogen.
Dilution	WB 1:500-2000
Concentration	1 mg/ml
Purity	≥90%
Storage Stability	-20°C/1 year
Synonyms	Radial spoke head protein 3 homolog (Radial spoke head-like protein 2)
Observed Band	60kD
Cell Pathway	Cytoplasm, cytoskeleton, cilium axoneme . Cell projection, cilium .
Tissue Specificity	Epithelium,Skin,Testis,Trachea,
Function	similarity:Belongs to the flagellar radial spoke RSP3 family.,
Background	
matters needing attention	Avoid repeated freezing and thawing!
Usage suggestions	This product can be used in immunological reaction related experiments. For more information, please consult technical personnel.

Nanjing BYabscience technology Co.,Ltd

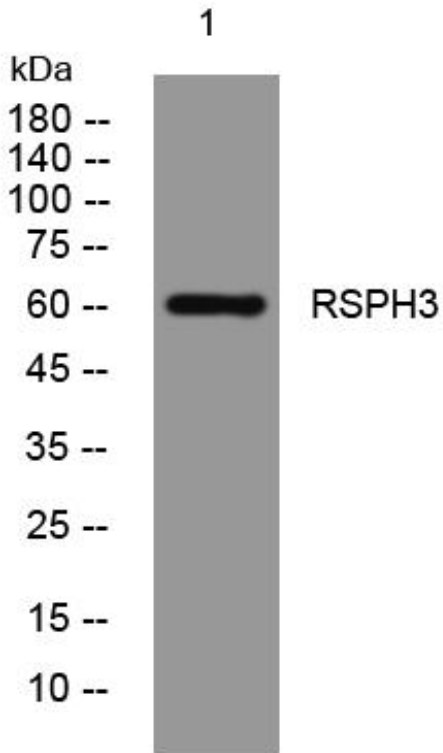
网址: www.njbybio.com

官方热线: 025-5229-8998

监督电话: 15950492658



Products Images



Western Blot analysis of various cells using RSPH3 mouse mAb