



# STX5 mouse mAb

Catalog No	BYmab-07960
Isotype	IgG
Reactivity	Human; Mouse;Rat
Applications	WB
Gene Name	STX5 STX5A
Protein Name	STX5
Immunogen	Synthesized peptide derived from human STX5 AA range: 233-283
Specificity	This antibody detects endogenous levels of STX5 at Human/Mouse/Rat
Formulation	Liquid in PBS containing 50% glycerol, 0.5% BSA and 0.74% sodium azide.
Source	Monoclonal, Mouse,IgG
Purification	The antibody was affinity-purified from mouse antiserum by affinity-chromatography using epitope-specific immunogen.
Dilution	WB 1:500-2000
Concentration	1 mg/ml
Purity	≥90%
Storage Stability	-20°C/1 year
Synonyms	Syntaxin-5
Observed Band	38kD
Cell Pathway	Endoplasmic reticulum-Golgi intermediate compartment membrane ; Single-pass type IV membrane protein . Golgi apparatus membrane . Localizes throughout the Golgi apparatus, but most abundant in the cis-most cisternae. .
Tissue Specificity	B-cell,Heart,Kidney,Umbilical cord blood,Uterus,
Function	function:Mediates endoplasmic reticulum to Golgi transport (By similarity). Golgi apparatus membrane; Single-pass type IV membrane protein .,similarity:Belongs to the syntaxin family.,similarity:Contains 1 t-SNARE coiled-coil homology domain.,subunit:Part of a ternary complex containing STX5A, NSFL1C and VCP. Identified in a unique SNARE complex composed of the Golgi SNAREs GOSR1, GOSR2 and YKT6.,
Background	This gene encodes a member of the syntaxin or t-SNARE (target-SNAP receptor) family. These proteins are found on cell membranes and serve as the targets for v-SNAREs (vesicle-SNAP receptors), permitting specific synaptic vesicle docking and fusion. The encoded protein regulates endoplasmic reticulum to Golgi

Nanjing BYabscience technology Co.,Ltd



transport and plays a critical role in autophagy. Autoantibodies targeting the encoded protein may be a diagnostic marker for endometriosis. Alternatively spliced transcript variants encoding multiple isoforms have been observed for this gene. [provided by RefSeq, Sep 2011],

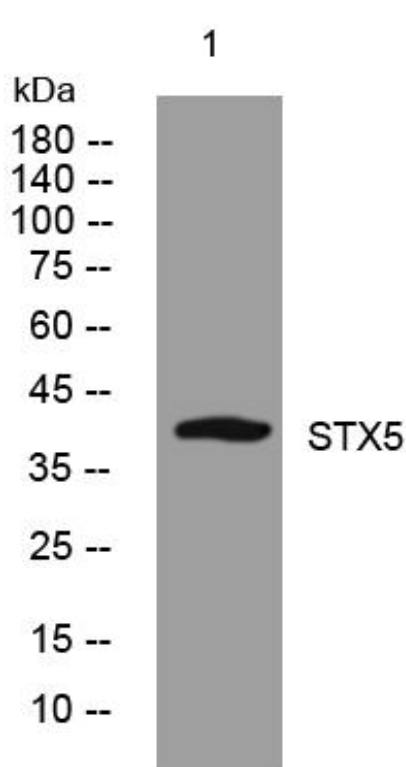
**matters needing attention**

Avoid repeated freezing and thawing!

**Usage suggestions**

This product can be used in immunological reaction related experiments. For more information, please consult technical personnel.

## Products Images



Western Blot analysis of various cells using STX5 mouse mAb