



DCD2C mouse mAb

Catalog No	BYmab-07951
Isotype	IgG
Reactivity	Human; Mouse
Applications	WB
Gene Name	DCDC2C
Protein Name	DCD2C
Immunogen	Synthesized peptide derived from human DCD2C AA range: 266-316
Specificity	This antibody detects endogenous levels of DCD2C at Human/Mouse
Formulation	Liquid in PBS containing 50% glycerol, 0.5% BSA and 0.65% sodium azide.
Source	Monoclonal, Mouse,IgG
Purification	The antibody was affinity-purified from mouse antiserum by affinity-chromatography using epitope-specific immunogen.
Dilution	WB 1:500-2000
Concentration	1 mg/ml
Purity	≥90%
Storage Stability	-20°C/1 year
Synonyms	Doublecortin domain-containing protein 2C
Observed Band	38kD
Cell Pathway	Cell projection, cilium, flagellum . Cytoplasm . Detected along the length of the sperm flagellum and in the cytoplasm of the germ cells. .
Tissue Specificity	Expressed in testis and spermatozoa (at protein level).
Function	
Background	
matters needing attention	Avoid repeated freezing and thawing!
Usage suggestions	This product can be used in immunological reaction related experiments. For more information, please consult technical personnel.

Nanjing BYabscience technology Co.,Ltd

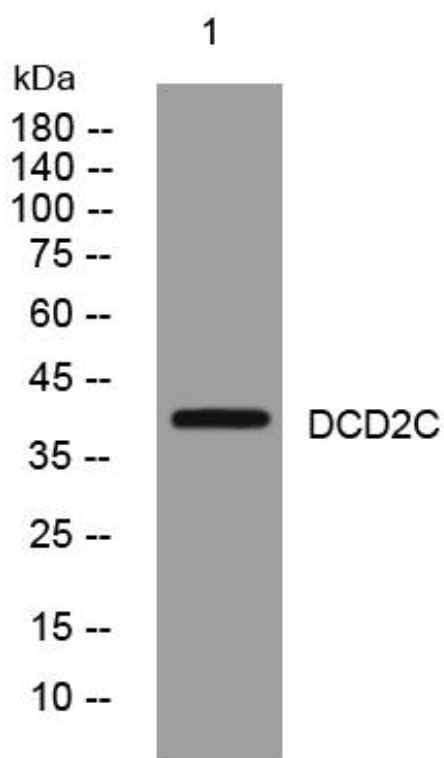
网址: www.njbybio.com

官方热线: 025-5229-8998

监督电话: 15950492658



Products Images



Western Blot analysis of various cells using DCD2C mouse mAb