



ATX3L mouse mAb

Catalog No	BYmab-07950
Isotype	IgG
Reactivity	Human;Rat;Mouse;
Applications	WB
Gene Name	ATXN3L ATX3L MJDL
Protein Name	ATX3L
Immunogen	Synthesized peptide derived from human ATX3L AA range: 99-149
Specificity	This antibody detects endogenous levels of ATX3L at Human
Formulation	Liquid in PBS containing 50% glycerol, 0.5% BSA and 0.64% sodium azide.
Source	Monoclonal, Mouse,IgG
Purification	The antibody was affinity-purified from mouse antiserum by affinity-chromatography using epitope-specific immunogen.
Dilution	WB 1:500-2000
Concentration	1 mg/ml
Purity	≥90%
Storage Stability	-20°C/1 year
Synonyms	Putative ataxin-3-like protein (EC 3.4.19.12) (Machado-Joseph disease protein 1-like)
Observed Band	38kD
Cell Pathway	Nucleus .
Tissue Specificity	Testis,
Function	caution:Could be the product of a pseudogene. Suggested by the absence of intron.,function:May bind to histones and regulate transcription. May act as a deubiquitinating enzyme.,similarity:Contains 1 Josephin domain.,similarity:Contains 2 UIM (ubiquitin-interacting motif) repeats.,
Background	This intronless gene may be a pseudogene (PMID:11450850). This gene is similar to the multi-exon gene which encodes ataxin 3 and contains a coding region which could encode a protein similar to ataxin 3. Mutations in the gene encoding ataxin 3 are associated with Machado-Joseph disease. [provided by RefSeq, Sep 2011],

Nanjing BYabscience technology Co.,Ltd



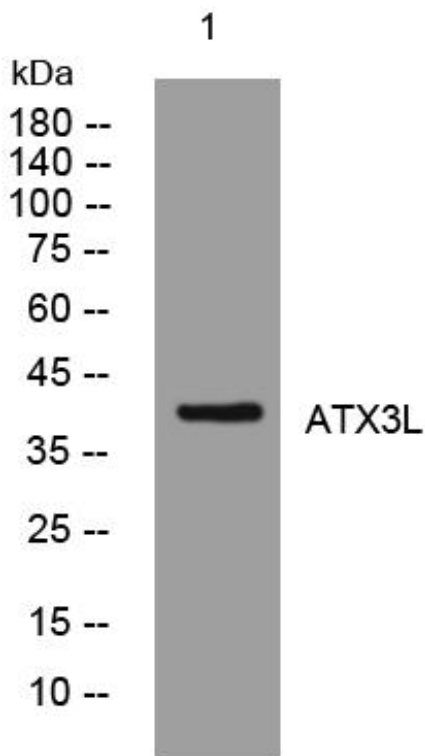
matters needing attention

Avoid repeated freezing and thawing!

Usage suggestions

This product can be used in immunological reaction related experiments. For more information, please consult technical personnel.

Products Images



Western Blot analysis of various cells using ATX3L mouse mAb

Nanjing BYabs science technology Co.,Ltd

网址: www.njbybio.com

官方热线: 025-5229-8998

监督电话: 15950492658