



# MBNL3 mouse mAb

<b>Catalog No</b>	BYmab-07944
<b>Isotype</b>	IgG
<b>Reactivity</b>	Human; Mouse
<b>Applications</b>	WB
<b>Gene Name</b>	MBNL3 CHCR MBLX39 MBXL
<b>Protein Name</b>	MBNL3
<b>Immunogen</b>	Synthesized peptide derived from human MBNL3 AA range: 184-234
<b>Specificity</b>	This antibody detects endogenous levels of MBNL3 at Human/Mouse
<b>Formulation</b>	Liquid in PBS containing 50% glycerol, 0.5% BSA and 0.58% sodium azide.
<b>Source</b>	Monoclonal, Mouse,IgG
<b>Purification</b>	The antibody was affinity-purified from mouse antiserum by affinity-chromatography using epitope-specific immunogen.
<b>Dilution</b>	WB 1:500-2000
<b>Concentration</b>	1 mg/ml
<b>Purity</b>	≥90%
<b>Storage Stability</b>	-20°C/1 year
<b>Synonyms</b>	Muscleblind-like protein 3 (Cys3His CCG1-required protein) (Muscleblind-like X-linked protein) (Protein HCHCR)
<b>Observed Band</b>	38kD
<b>Cell Pathway</b>	Nucleus . Cytoplasm . Greater concentration in the nucleus. In both DM1 and DM2 patients, colocalizes with nuclear foci of retained expanded-repeat transcripts.
<b>Tissue Specificity</b>	Highly expressed in the placenta.
<b>Function</b>	function:Could inhibit terminal muscle differentiation, acting at approximately the time of myogenin induction.,similarity:Belongs to the muscleblind family.,similarity:Contains 4 C3H1-type zinc fingers.,subcellular location:Greater concentration in the nucleus. In both myotonic dystrophy 1 (DM1) and DM2 patients, colocalizes with nuclear foci of retained expanded-repeat transcripts.,tissue specificity:Highly expressed in the placenta.,
<b>Background</b>	This gene encodes a member of the muscleblind-like family of proteins. The encoded protein may function in regulation of alternative splicing and may play a role in the pathophysiology of myotonic dystrophy. Alternatively spliced transcript

**Nanjing BYabscience technology Co.,Ltd**



variants have been described. [provided by RefSeq, Dec 2009],

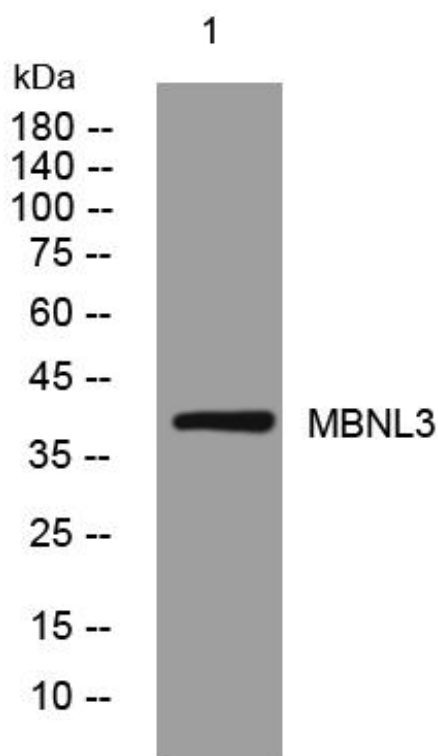
**matters needing attention**

Avoid repeated freezing and thawing!

**Usage suggestions**

This product can be used in immunological reaction related experiments. For more information, please consult technical personnel.

## Products Images



Western Blot analysis of various cells using MBNL3 mouse mAb