



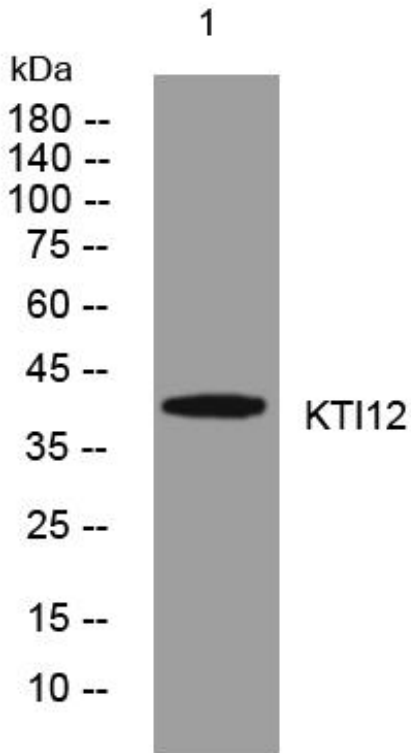
KTI12 mouse mAb

Catalog No	BYmab-07943
Isotype	IgG
Reactivity	Human; Mouse;Rat
Applications	WB
Gene Name	KTI12 SBBI81
Protein Name	KTI12
Immunogen	Synthesized peptide derived from human KTI12 AA range: 98-148
Specificity	This antibody detects endogenous levels of KTI12 at Human/Mouse/Rat
Formulation	Liquid in PBS containing 50% glycerol, 0.5% BSA and 0.57% sodium azide.
Source	Monoclonal, Mouse,IgG
Purification	The antibody was affinity-purified from mouse antiserum by affinity-chromatography using epitope-specific immunogen.
Dilution	WB 1:500-2000
Concentration	1 mg/ml
Purity	≥90%
Storage Stability	-20°C/1 year
Synonyms	Protein KTI12 homolog
Observed Band	38kD
Cell Pathway	
Tissue Specificity	Skin,
Function	similarity:Belongs to the KTI12 family.,
Background	
matters needing attention	Avoid repeated freezing and thawing!
Usage suggestions	This product can be used in immunological reaction related experiments. For more information, please consult technical personnel.

Nanjing BYabscience technology Co.,Ltd



Products Images



Western Blot analysis of various cells using KT112 mouse mAb

Nanjing BYabs science technology Co.,Ltd

网址: www.njbybio.com

官方热线: 025-5229-8998

监督电话: 15950492658