



GRAM2 mouse mAb

Catalog No	BYmab-07940
Isotype	IgG
Reactivity	Human; Mouse
Applications	WB
Gene Name	GRAMD2
Protein Name	GRAM2
Immunogen	Synthesized peptide derived from human GRAM2 AA range: 150-200
Specificity	This antibody detects endogenous levels of GRAM2 at Human/Mouse
Formulation	Liquid in PBS containing 50% glycerol, 0.5% BSA and 0.54% sodium azide.
Source	Monoclonal, Mouse,IgG
Purification	The antibody was affinity-purified from mouse antiserum by affinity-chromatography using epitope-specific immunogen.
Dilution	WB 1:500-2000
Concentration	1 mg/ml
Purity	≥90%
Storage Stability	-20°C/1 year
Synonyms	GRAM domain-containing protein 2
Observed Band	38kD
Cell Pathway	Endoplasmic reticulum membrane ; Single-pass membrane protein . Cell membrane ; Peripheral membrane protein . Localizes to endoplasmic reticulum-plasma membrane contact sites (EPCS). Anchored at the ER, PM binding is mediated via GRAM domain and phosphatidylinositol lipid interaction. Localizes to distinct EPCS than GRAMD1A. .
Tissue Specificity	Brain,Hippocampus,
Function	similarity:Contains 1 GRAM domain.,
Background	
matters needing attention	Avoid repeated freezing and thawing!

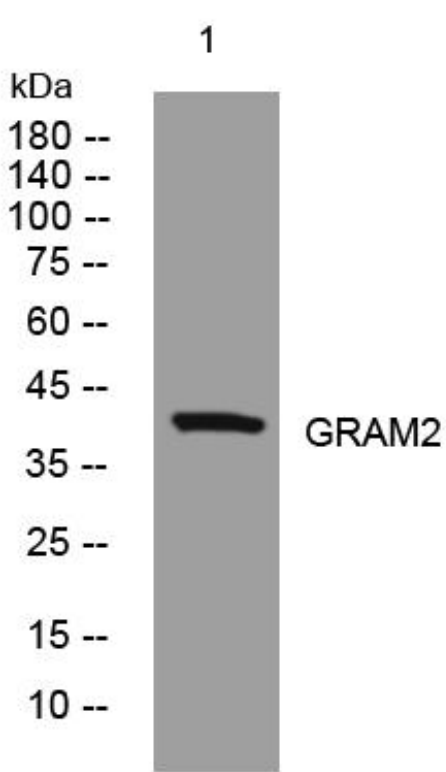
Nanjing BYabscience technology Co.,Ltd



Usage suggestions

This product can be used in immunological reaction related experiments. For more information, please consult technical personnel.

Products Images



Western Blot analysis of various cells using GRAM2 mouse mAb

Nanjing BYabs science technology Co.,Ltd

网址: www.njbybio.com

官方热线: 025-5229-8998

监督电话: 15950492658