



# DCDC1 mouse mAb

Catalog No	BYmab-07936
Isotype	IgG
Reactivity	Human;Rat;Mouse;
Applications	WB
Gene Name	DCDC1
Protein Name	DCDC1
Immunogen	Synthesized peptide derived from human DCDC1 AA range: 111-161
Specificity	This antibody detects endogenous levels of DCDC1 at Human
Formulation	Liquid in PBS containing 50% glycerol, 0.5% BSA and 0.50% sodium azide.
Source	Monoclonal, Mouse,IgG
Purification	The antibody was affinity-purified from mouse antiserum by affinity-chromatography using epitope-specific immunogen.
Dilution	WB 1:500-2000
Concentration	1 mg/ml
Purity	≥90%
Storage Stability	-20°C/1 year
Synonyms	Doublecortin domain-containing protein 1
Observed Band	38kD
Cell Pathway	intracellular,cytoplasm,
Tissue Specificity	Fetal brain,
Function	similarity:Contains 1 doublecortin domain.,tissue specificity:Highly expressed in testis. Lower levels of expression in lung, kidney, and pancreas. Higher expression in fetal brain than in adult brain.,
Background	This gene encodes a member of the doublecortin family. The protein encoded by this gene is a hydrophilic, intracellular protein. It contains a single doublecortin domain and is unable to bind microtubules and to regulate microtubule polymerization. This gene is mainly expressed in adult testis. It does not have a mouse homolog. [provided by RefSeq, Sep 2010],
matters needing attention	Avoid repeated freezing and thawing!

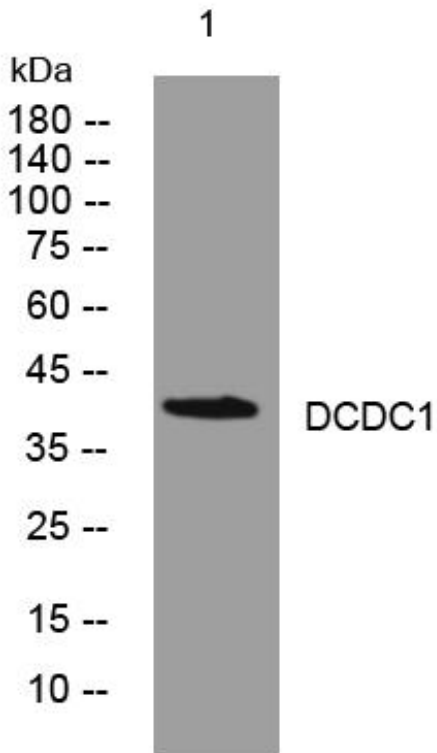
Nanjing BYabscience technology Co.,Ltd



### Usage suggestions

This product can be used in immunological reaction related experiments. For more information, please consult technical personnel.

## Products Images



Western Blot analysis of various cells using DCDC1 mouse mAb

Nanjing BYabscience technology Co.,Ltd

网址: [www.njbybio.com](http://www.njbybio.com)

官方热线: 025-5229-8998

监督电话: 15950492658