



CLVS1 mouse mAb

Catalog No	BYmab-07935
Isotype	IgG
Reactivity	Human; Mouse;Rat
Applications	WB
Gene Name	CLVS1 CRALBPL RLBP1L1
Protein Name	CLVS1
Immunogen	Synthesized peptide derived from human CLVS1 AA range: 16-66
Specificity	This antibody detects endogenous levels of CLVS1 at Human/Mouse/Rat
Formulation	Liquid in PBS containing 50% glycerol, 0.5% BSA and 0.49% sodium azide.
Source	Monoclonal, Mouse,IgG
Purification	The antibody was affinity-purified from mouse antiserum by affinity-chromatography using epitope-specific immunogen.
Dilution	WB 1:500-2000
Concentration	1 mg/ml
Purity	≥90%
Storage Stability	-20°C/1 year
Synonyms	Clavesin-1 (Cellular retinaldehyde-binding protein-like) (Retinaldehyde-binding protein 1-like 1)
Observed Band	38kD
Cell Pathway	Golgi apparatus, trans-Golgi network membrane ; Peripheral membrane protein . Cytoplasmic vesicle, clathrin-coated vesicle . Early endosome membrane ; Peripheral membrane protein .
Tissue Specificity	Expressed mainly in the brain.
Function	
Background	
matters needing attention	Avoid repeated freezing and thawing!

Nanjing BYabscience technology Co.,Ltd

网址: www.njbybio.com

官方热线: 025-5229-8998

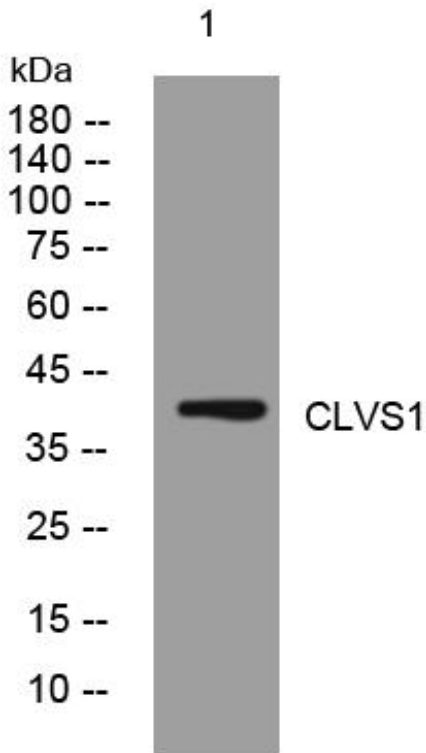
监督电话: 15950492658



Usage suggestions

This product can be used in immunological reaction related experiments. For more information, please consult technical personnel.

Products Images



Western Blot analysis of various cells using CLVS1 mouse mAb

Nanjing BYabs science technology Co.,Ltd

网址: www.njbybio.com

官方热线: 025-5229-8998

监督电话: 15950492658