



ATOH1 mouse mAb

Catalog No	BYmab-07932
Isotype	IgG
Reactivity	Human; Mouse
Applications	WB
Gene Name	ATOH1 ATH1 BHLHA14
Protein Name	ATOH1
Immunogen	Synthesized peptide derived from human ATOH1 AA range: 38-88
Specificity	This antibody detects endogenous levels of ATOH1 at Human/Mouse
Formulation	Liquid in PBS containing 50% glycerol, 0.5% BSA and 0.46% sodium azide.
Source	Monoclonal, Mouse,IgG
Purification	The antibody was affinity-purified from mouse antiserum by affinity-chromatography using epitope-specific immunogen.
Dilution	WB 1:500-2000
Concentration	1 mg/ml
Purity	≥90%
Storage Stability	-20°C/1 year
Synonyms	Protein atonal homolog 1 (Class A basic helix-loop-helix protein 14) (bHLHa14) (Helix-loop-helix protein hATH-1) (hATH1)
Observed Band	38kD
Cell Pathway	Nucleus .
Tissue Specificity	PCR rescued clones,
Function	function:Activates E box-dependent transcription in collaboration with TCF3/E47, but the activity is completely antagonized by the negative regulator of neurogenesis HES1. May play a role in the differentiation of subsets of neural cells by activating E box-dependent transcription.,similarity:Contains 1 basic helix-loop-helix (bHLH) domain.,subunit:Efficient DNA binding requires dimerization with another bHLH protein.,
Background	This protein belongs to the basic helix-loop-helix (BHLH) family of transcription factors. It activates E-box dependent transcription along with E47. [provided by RefSeq, Jul 2008],

Nanjing BYabscience technology Co.,Ltd



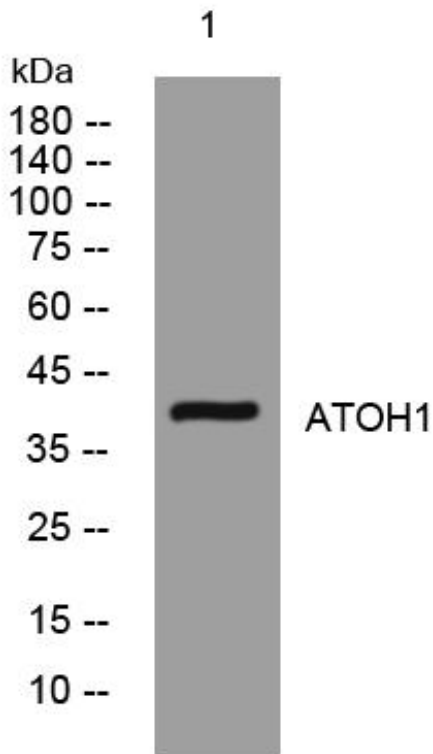
matters needing attention

Avoid repeated freezing and thawing!

Usage suggestions

This product can be used in immunological reaction related experiments. For more information, please consult technical personnel.

Products Images



Western Blot analysis of various cells using ATOH1 mouse mAb

Nanjing BYabs science technology Co.,Ltd

网址: www.njbybio.com

官方热线: 025-5229-8998

监督电话: 15950492658