



ARHL1 mouse mAb

Catalog No	BYmab-07931
Isotype	IgG
Reactivity	Human; Mouse;Rat
Applications	WB
Gene Name	ADPRHL1 ARH2
Protein Name	ARHL1
Immunogen	Synthesized peptide derived from human ARHL1 AA range: 174-224
Specificity	This antibody detects endogenous levels of ARHL1 at Human/Mouse/Rat
Formulation	Liquid in PBS containing 50% glycerol, 0.5% BSA and 0.45% sodium azide.
Source	Monoclonal, Mouse,IgG
Purification	The antibody was affinity-purified from mouse antiserum by affinity-chromatography using epitope-specific immunogen.
Dilution	WB 1:500-2000
Concentration	1 mg/ml
Purity	≥90%
Storage Stability	-20°C/1 year
Synonyms	[Protein ADP-ribosylarginine] hydrolase-like protein 1 (ADP-ribosylhydrolase 2)
Observed Band	38kD
Cell Pathway	Cytoplasm, myofibril, sarcomere .
Tissue Specificity	Ovary,
Function	similarity:Belongs to the ADP-ribosylglycohydrolase family.,
Background	ADP-ribosylation is a reversible posttranslational modification used to regulate protein function. ADP-ribosyltransferases (see ART1; MIM 601625) transfer ADP-ribose from NAD ⁺ to the target protein, and ADP-ribosylhydrolases, such as ADPRHL1, reverse the reaction (Glowacki et al., 2002 [PubMed 12070318]).[supplied by OMIM, Mar 2008],
matters needing attention	Avoid repeated freezing and thawing!

Nanjing BYabscience technology Co.,Ltd

网址: www.njbybio.com

官方热线: 025-5229-8998

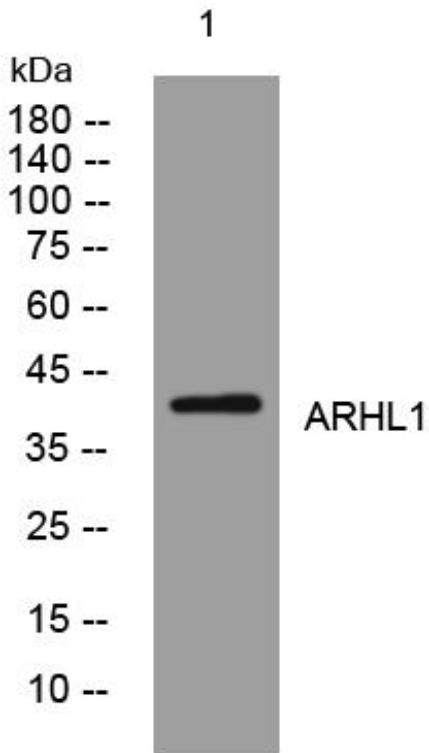
监督电话: 15950492658



Usage suggestions

This product can be used in immunological reaction related experiments. For more information, please consult technical personnel.

Products Images



Western Blot analysis of various cells using ARHL1 mouse mAb

Nanjing BYabscience technology Co.,Ltd

网址: www.njbybio.com

官方热线: 025-5229-8998

监督电话: 15950492658