



TIM50 mouse mAb

Catalog No	BYmab-07929
Isotype	IgG
Reactivity	Human; Mouse
Applications	WB
Gene Name	TIMM50 TIM50 PRO1512
Protein Name	TIM50
Immunogen	Synthesized peptide derived from human TIM50 AA range: 109-159
Specificity	This antibody detects endogenous levels of TIM50 at Human/Mouse
Formulation	Liquid in PBS containing 50% glycerol, 0.5% BSA and 0.43% sodium azide.
Source	Monoclonal, Mouse,IgG
Purification	The antibody was affinity-purified from mouse antiserum by affinity-chromatography using epitope-specific immunogen.
Dilution	WB 1:500-2000
Concentration	1 mg/ml
Purity	≥90%
Storage Stability	-20°C/1 year
Synonyms	Mitochondrial import inner membrane translocase subunit TIM50
Observed Band	38kD
Cell Pathway	Mitochondrion inner membrane ; Single-pass membrane protein .; [Isoform 2]: Nucleus speckle . Nuclear and enriched in speckles with snRNPs. .
Tissue Specificity	Widely expressed. Expressed at higher level in brain, kidney and liver (at protein level).
Function	domain:The FCP1 homology domain does not contain the canonical D-x-D-x-[TV] active site, suggesting that it probably does not display phosphatase activity in vivo.,function:Essential component of the TIM23 complex, a complex that mediates the translocation of transit peptide-containing proteins across the mitochondrial inner membrane. Has some phosphatase activity in vitro; however such activity may not be relevant in vivo. Isoform 2 may participate in the release of snRNPs and SMN from the Cajal body.,sequence caution:Chimera.,similarity:Belongs to the TIM50 family.,similarity:Contains 1 FCP1 homology domain.,subcellular location:Nuclear and enriched in speckles with snRNPs.,subunit:Component of the TIM23 complex at least composed of TIMM23, TIMM17 (TIMM17A or TIMM17B) and TIMM50. Interacts directly with

Nanjing BYabscience technology Co.,Ltd



TIMM23. Isoform 2 interacts with COIL and snRNPs.,tissue specificity:Widely express

Background

This gene encodes a subunit of the TIM23 inner mitochondrial membrane translocase complex. The encoded protein functions as the receptor subunit that recognizes the mitochondrial targeting signal, or presequence, on protein cargo that is destined for the mitochondrial inner membrane and matrix. This protein may also play a role in maintaining the membrane permeability barrier, and knockdown of this gene in human cells results in the release of cytochrome c and apoptosis. [provided by RefSeq, Jul 2016],

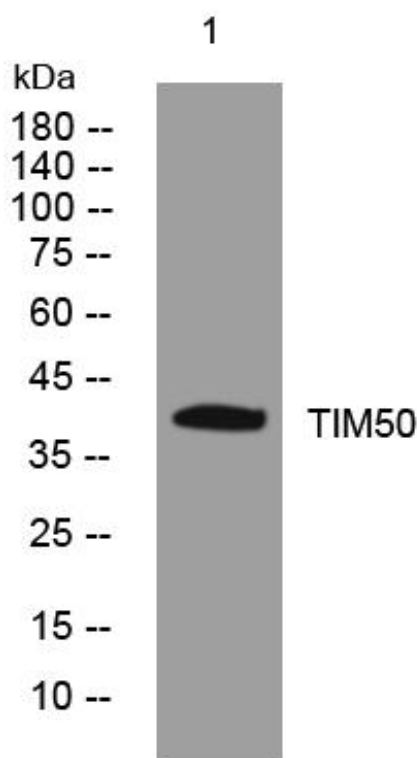
matters needing attention

Avoid repeated freezing and thawing!

Usage suggestions

This product can be used in immunological reaction related experiments. For more information, please consult technical personnel.

Products Images



Western Blot analysis of various cells using TIM50 mouse mAb