



TCP2L mouse mAb

| | |
|---------------------------|---|
| Catalog No | BYmab-07927 |
| Isotype | IgG |
| Reactivity | Human;Rat;Mouse; |
| Applications | WB |
| Gene Name | TCP10L2 |
| Protein Name | TCP2L |
| Immunogen | Synthesized peptide derived from human TCP2L AA range: 276-326 |
| Specificity | This antibody detects endogenous levels of TCP2L at Human |
| Formulation | Liquid in PBS containing 50% glycerol, 0.5% BSA and 0.41% sodium azide. |
| Source | Monoclonal, Mouse,IgG |
| Purification | The antibody was affinity-purified from mouse antiserum by affinity-chromatography using epitope-specific immunogen. |
| Dilution | WB 1:500-2000 |
| Concentration | 1 mg/ml |
| Purity | ≥90% |
| Storage Stability | -20°C/1 year |
| Synonyms | Putative t-complex protein 10A homolog 2 (T-complex 10-like protein 2) |
| Observed Band | 38kD |
| Cell Pathway | |
| Tissue Specificity | Testis, |
| Function | caution:The sequence shown here is derived from an Ensembl automatic analysis pipeline and should be considered as preliminary data.,similarity:Belongs to the TCP10 family., |
| Background | |
| matters needing attention | Avoid repeated freezing and thawing! |

Nanjing BYabscience technology Co.,Ltd

网址: www.njbybio.com

官方热线: 025-5229-8998

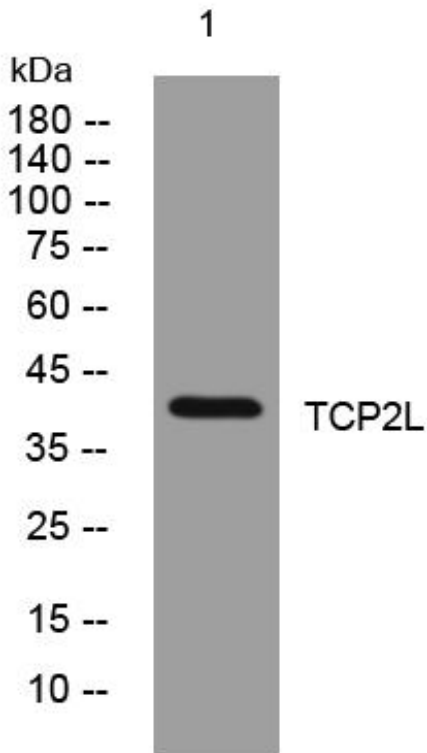
监督电话: 15950492658



Usage suggestions

This product can be used in immunological reaction related experiments. For more information, please consult technical personnel.

Products Images



Western Blot analysis of various cells using TCP2L mouse mAb

Nanjing BYabs science technology Co.,Ltd

网址: www.njbybio.com

官方热线: 025-5229-8998

监督电话: 15950492658