



TCP10 mouse mAb

Catalog No	BYmab-07926
Isotype	IgG
Reactivity	Human;Rat;Mouse;
Applications	WB
Gene Name	TCP10 TCP10A
Protein Name	TCP10
Immunogen	Synthesized peptide derived from human TCP10 AA range: 69-119
Specificity	This antibody detects endogenous levels of TCP10 at Human
Formulation	Liquid in PBS containing 50% glycerol, 0.5% BSA and 0.40% sodium azide.
Source	Monoclonal, Mouse,IgG
Purification	The antibody was affinity-purified from mouse antiserum by affinity-chromatography using epitope-specific immunogen.
Dilution	WB 1:500-2000
Concentration	1 mg/ml
Purity	≥90%
Storage Stability	-20°C/1 year
Synonyms	T-complex protein 10A homolog
Observed Band	38kD
Cell Pathway	cytosol,
Tissue Specificity	Testis,
Function	caution:The sequence shown here is derived from an Ensembl automatic analysis pipeline and should be considered as preliminary data.,similarity:Belongs to the TCP10 family.,
Background	
matters needing attention	Avoid repeated freezing and thawing!

Nanjing BYabscience technology Co.,Ltd

网址: www.njbybio.com

官方热线: 025-5229-8998

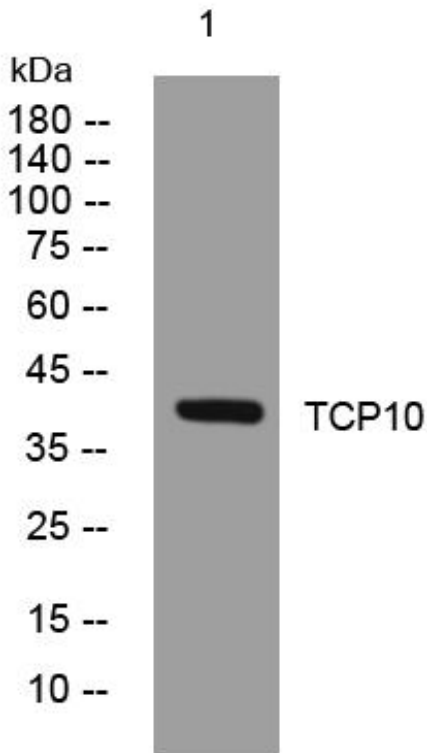
监督电话: 15950492658



Usage suggestions

This product can be used in immunological reaction related experiments. For more information, please consult technical personnel.

Products Images



Western Blot analysis of various cells using TCP10 mouse mAb

Nanjing BYabs science technology Co.,Ltd

网址: www.njbybio.com

官方热线: 025-5229-8998

监督电话: 15950492658