



MRM1 mouse mAb

Catalog No	BYmab-07923
Isotype	IgG
Reactivity	Human; Mouse
Applications	WB
Gene Name	MRM1
Protein Name	MRM1
Immunogen	Synthesized peptide derived from human MRM1 AA range: 119-169
Specificity	This antibody detects endogenous levels of MRM1 at Human/Mouse
Formulation	Liquid in PBS containing 50% glycerol, 0.5% BSA and 0.37% sodium azide.
Source	Monoclonal, Mouse,IgG
Purification	The antibody was affinity-purified from mouse antiserum by affinity-chromatography using epitope-specific immunogen.
Dilution	WB 1:500-2000
Concentration	1 mg/ml
Purity	≥90%
Storage Stability	-20°C/1 year
Synonyms	rRNA methyltransferase 1, mitochondrial (EC 2.1.1.-) (Mitochondrial large ribosomal RNA ribose methylase)
Observed Band	38kD
Cell Pathway	Mitochondrion .
Tissue Specificity	Kidney,Skin,Small intestine,
Function	function:Probably methylates the ribose of guanosine G-2270 in the peptidyl transferase center of the mitochondrial large ribosomal RNA (21S).,similarity:Belongs to the RNA methyltransferase trmH family.,
Background	
matters needing attention	Avoid repeated freezing and thawing!

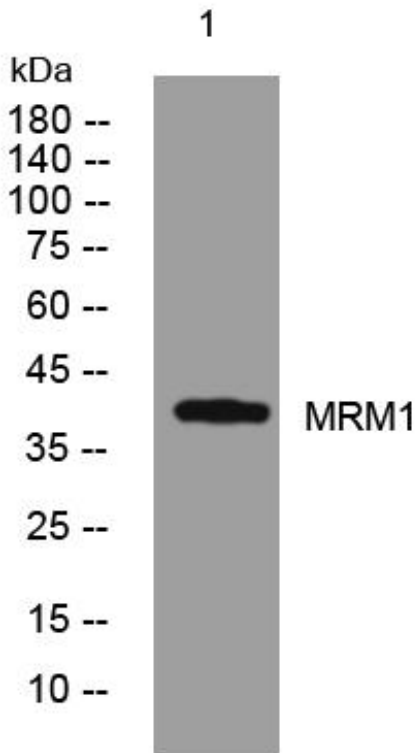
Nanjing BYabscience technology Co.,Ltd



Usage suggestions

This product can be used in immunological reaction related experiments. For more information, please consult technical personnel.

Products Images



Western Blot analysis of various cells using MRM1 mouse mAb

Nanjing BYabscience technology Co.,Ltd

网址: www.njbybio.com

官方热线: 025-5229-8998

监督电话: 15950492658