



CC032 mouse mAb

| | |
|---------------------------|---|
| Catalog No | BYmab-07916 |
| Isotype | IgG |
| Reactivity | Human; Mouse |
| Applications | WB |
| Gene Name | C3orf32 FLS485 |
| Protein Name | CC032 |
| Immunogen | Synthesized peptide derived from human CC032 AA range: 273-323 |
| Specificity | This antibody detects endogenous levels of CC032 at Human/Mouse |
| Formulation | Liquid in PBS containing 50% glycerol, 0.5% BSA and 0.30% sodium azide. |
| Source | Monoclonal, Mouse,IgG |
| Purification | The antibody was affinity-purified from mouse antiserum by affinity-chromatography using epitope-specific immunogen. |
| Dilution | WB 1:500-2000 |
| Concentration | 1 mg/ml |
| Purity | ≥90% |
| Storage Stability | -20°C/1 year |
| Synonyms | Uncharacterized protein C3orf32 |
| Observed Band | 38kD |
| Cell Pathway | Cytoplasm . Nucleus . |
| Tissue Specificity | Expressed in enterocytes of small and large intestinal mucosa (at protein level). Expressed in chromaffine and interstitial cells. Expressed in peripheral blood and gingival cells (PubMed:27680507). |
| Function | |
| Background | |
| matters needing attention | Avoid repeated freezing and thawing! |

Nanjing BYabscience technology Co.,Ltd

网址: www.njbybio.com

官方热线: 025-5229-8998

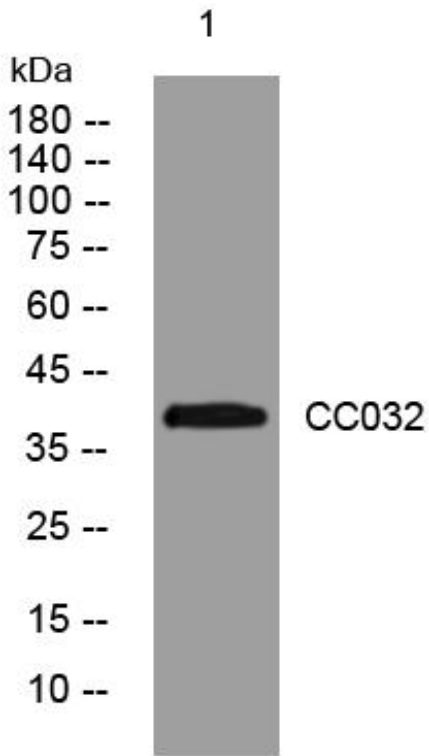
监督电话: 15950492658



Usage suggestions

This product can be used in immunological reaction related experiments. For more information, please consult technical personnel.

Products Images



Western Blot analysis of various cells using CC032 mouse mAb

Nanjing BYabs science technology Co.,Ltd

网址: www.njbybio.com

官方热线: 025-5229-8998

监督电话: 15950492658