



SYAP1 mouse mAb

Catalog No	BYmab-07912
Isotype	IgG
Reactivity	Human; Mouse
Applications	WB
Gene Name	SYAP1 PRO3113
Protein Name	SYAP1
Immunogen	Synthesized peptide derived from human SYAP1 AA range: 183-233
Specificity	This antibody detects endogenous levels of SYAP1 at Human/Mouse
Formulation	Liquid in PBS containing 50% glycerol, 0.5% BSA and 0.26% sodium azide.
Source	Monoclonal, Mouse,IgG
Purification	The antibody was affinity-purified from mouse antiserum by affinity-chromatography using epitope-specific immunogen.
Dilution	WB 1:500-2000
Concentration	1 mg/ml
Purity	≥90%
Storage Stability	-20°C/1 year
Synonyms	Synapse-associated protein 1
Observed Band	38kD
Cell Pathway	Cytoplasm, perinuclear region . Golgi apparatus . Perikaryon . Cell projection, axon . Cell projection, dendrite . Cell projection, growth cone . Cell junction, synapse, presynaptic cell membrane . Cell junction, synapse, postsynaptic cell membrane . Membrane . Localizes to cholinergic neuromuscular junctions and in actin-rich growth cone regions (By similarity). Membrane-associated in a epidermal growth factor (EGF)-dependent manner (PubMed:23300339). .
Tissue Specificity	Expressed in heart, placenta, lung, liver, skeletal muscle, kidney and pancreas (PubMed:23300339).
Function	similarity:Contains 1 BSD domain.,
Background	
matters needing attention	Avoid repeated freezing and thawing!

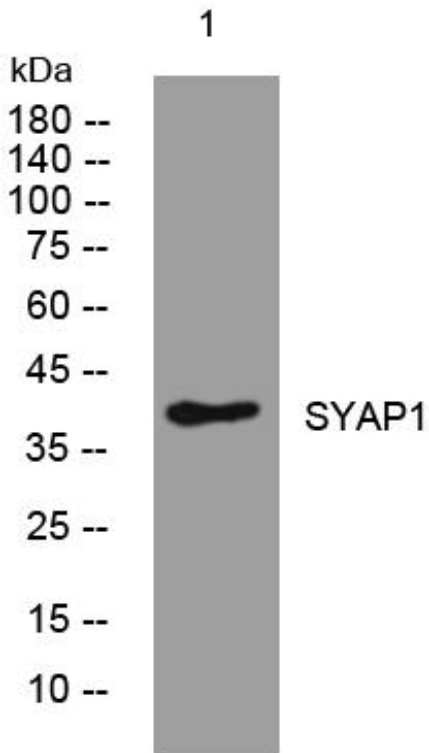
Nanjing BYabscience technology Co.,Ltd



Usage suggestions

This product can be used in immunological reaction related experiments. For more information, please consult technical personnel.

Products Images



Western Blot analysis of various cells using SYAP1 mouse mAb

Nanjing BYabscience technology Co.,Ltd

网址: www.njbybio.com

官方热线: 025-5229-8998

监督电话: 15950492658