



SPEB mouse mAb

Catalog No	BYmab-07911
Isotype	IgG
Reactivity	Human; Mouse;Rat
Applications	WB
Gene Name	AGMAT
Protein Name	SPEB
Immunogen	Synthesized peptide derived from human SPEB AA range: 266-316
Specificity	This antibody detects endogenous levels of SPEB at Human/Mouse/Rat
Formulation	Liquid in PBS containing 50% glycerol, 0.5% BSA and 0.25% sodium azide.
Source	Monoclonal, Mouse,IgG
Purification	The antibody was affinity-purified from mouse antiserum by affinity-chromatography using epitope-specific immunogen.
Dilution	WB 1:500-2000
Concentration	1 mg/ml
Purity	≥90%
Storage Stability	-20°C/1 year
Synonyms	Agmatinase, mitochondrial (EC 3.5.3.11) (Agmatine ureohydrolase) (AUH)
Observed Band	38kD
Cell Pathway	Mitochondrion.
Tissue Specificity	Highly expressed in liver and kidney. Also found in skeletal muscle, fetal liver, brain, testis, skin and the gastrointestinal tract. Within brain, expression is higher in the cerebral cortex with lower levels in the medulla and spinal cord.
Function	catalytic activity:Agmatine + H(2)O = putrescine + urea.,cofactor:Manganese .,pathway:Amine and polyamine biosynthesis; putrescine biosynthesis via agmatine pathway; putrescine from agmatine (ADC route): step 1/1.,similarity:Belongs to the arginase family. Agmatinase subfamily.,tissue specificity:Highly expressed in liver and kidney. Also found in skeletal muscle, fetal liver, brain, testis, skin and the gastrointestinal tract.,
Background	

Nanjing BYabscience technology Co.,Ltd

网址: www.njbybio.com

官方热线: 025-5229-8998

监督电话: 15950492658



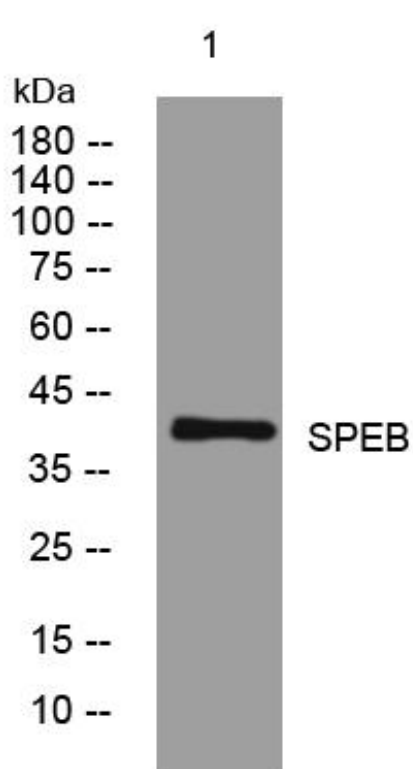
matters needing attention

Avoid repeated freezing and thawing!

Usage suggestions

This product can be used in immunological reaction related experiments. For more information, please consult technical personnel.

Products Images



Western Blot analysis of various cells using SPEB mouse mAb