



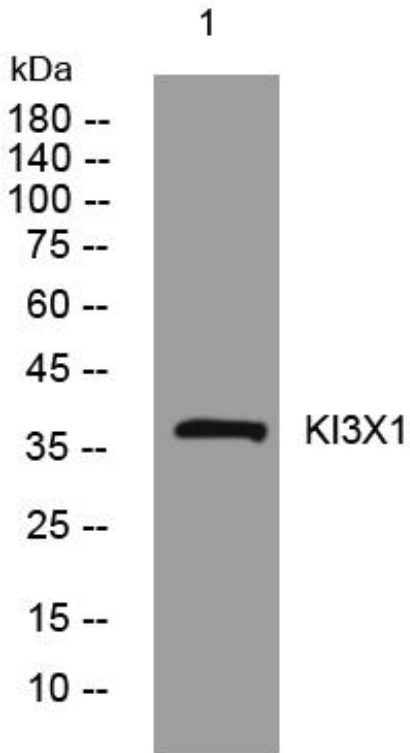
KI3X1 mouse mAb

Catalog No	BYmab-07906
Isotype	IgG
Reactivity	Human;Rat;Mouse;
Applications	WB
Gene Name	KIR3DX1 KIR3DL0 LENG12
Protein Name	KI3X1
Immunogen	Synthesized peptide derived from human KI3X1 AA range: 100-150
Specificity	This antibody detects endogenous levels of KI3X1 at Human
Formulation	Liquid in PBS containing 50% glycerol, 0.5% BSA and 0.20% sodium azide.
Source	Monoclonal, Mouse,IgG
Purification	The antibody was affinity-purified from mouse antiserum by affinity-chromatography using epitope-specific immunogen.
Dilution	WB 1:500-2000
Concentration	1 mg/ml
Purity	≥90%
Storage Stability	-20°C/1 year
Synonyms	Putative killer cell immunoglobulin-like receptor-like protein KIR3DX1 (Leukocyte receptor cluster member 12)
Observed Band	38kD
Cell Pathway	Secreted .
Tissue Specificity	Expressed in NK-cells.
Function	
Background	
matters needing attention	Avoid repeated freezing and thawing!
Usage suggestions	This product can be used in immunological reaction related experiments. For more information, please consult technical personnel.

Nanjing BYabscience technology Co.,Ltd



Products Images



Western Blot analysis of various cells using KI3X1 mouse mAb