



ZPBP1 mouse mAb

Catalog No	BYmab-07901
Isotype	IgG
Reactivity	Human; Mouse
Applications	WB
Gene Name	ZPBP ZPBP1
Protein Name	ZPBP1
Immunogen	Synthesized peptide derived from human ZPBP1 AA range: 176-226
Specificity	This antibody detects endogenous levels of ZPBP1 at Human/Mouse
Formulation	Liquid in PBS containing 50% glycerol, 0.5% BSA and 0.15% sodium azide.
Source	Monoclonal, Mouse,IgG
Purification	The antibody was affinity-purified from mouse antiserum by affinity-chromatography using epitope-specific immunogen.
Dilution	WB 1:500-2000
Concentration	1 mg/ml
Purity	≥90%
Storage Stability	-20°C/1 year
Synonyms	Zona pellucida-binding protein 1 (Sp38)
Observed Band	38kD
Cell Pathway	Cytoplasmic vesicle, secretory vesicle, acrosome membrane ; Peripheral membrane protein . Secreted . First localized in acrosome granule, later migrates to the inner and outer acrosomal membrane. Released after the acrosomal reaction. .
Tissue Specificity	Expressed specifically in testis.
Function	function:May be implicated in gamete interaction during fertilization.,similarity:Belongs to the zona pellucida-binding protein Sp38 family.,
Background	ZPBP is one of several proteins that are thought to participate in secondary binding between acrosome-reacted sperm and the egg-specific extracellular matrix, the zona pellucida (McLeskey et al., 1998 [PubMed 9378618]).[supplied by OMIM, Aug 2008],
matters needing attention	Avoid repeated freezing and thawing!

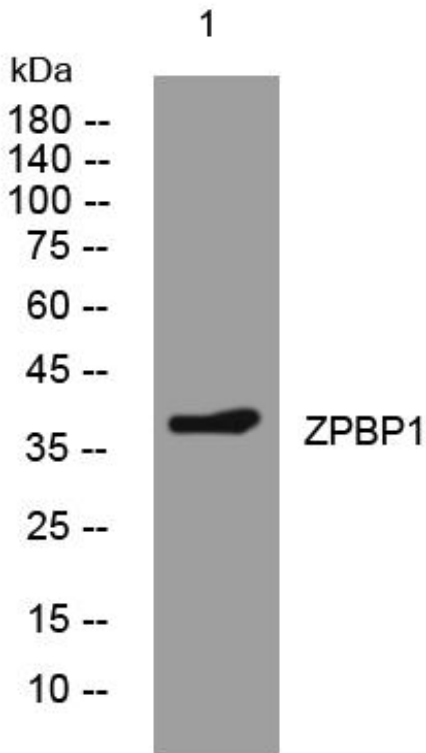
Nanjing BYabscience technology Co.,Ltd



Usage suggestions

This product can be used in immunological reaction related experiments. For more information, please consult technical personnel.

Products Images



Western Blot analysis of various cells using ZPBP1 mouse mAb

Nanjing BYabs science technology Co.,Ltd

网址: www.njbybio.com

官方热线: 025-5229-8998

监督电话: 15950492658